

# 2025 Q3 Kulzer Lab Specials

AVAILABLE UNTIL 9.30.2025



cara®

dima®

# cara<sup>®</sup> PRINT CUBE

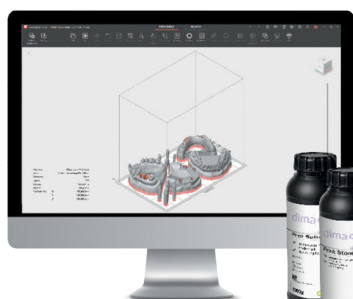
IT'S MORE THAN  
3D PRINTING.

IT'S A COMPLETE  
WORKFLOW.



**KULZER**  
MITSUI CHEMICALS GROUP

FULLY  
VALIDATED  
WORKFLOW



FOR MORE INFORMATION ON THE CARA<sup>®</sup> PRINT CUBE,  
CONTACT YOUR KULZER SALES REPRESENTATIVE OR  
VISIT [KULZERUS.COM/MY-CUBE](https://www.kulzerus.com/my-cube)

# 2025 Q3 Kulzer Lab Specials



**KULZER**  
MITSUI CHEMICALS GROUP

**CAN'T  
MISS  
OFFER**

## MONDIAL® TEETH & PALA® DENTURE ACCESSORIES



Pala® Denture  
Teeth Info



Pala® Dental  
Materials Info



**BUY 10** Mondial® or Mondial® i Teeth Cards

**GET 1** Pala Polish + 1 Palaseal® (2 x 15 ml) at NO CHARGE!

CAMPAIGN#: 1000806537.

**BUY 4  
GET 1**



**BUY 4** Modern Materials®  
Gypsum (25lbs or 45lbs)\*

**GET 1** at NO EXTRA CHARGE!



Modern Materials® Info

**BUY 2  
GET 1**



**BUY 2** PalaPress® Vario Acrylic  
Powder and Liquid Combination  
**GET 1** AT NO EXTRA CHARGE!

CAMPAIGN#: 1000806151.



Pala® Dental Materials Info

**MIX AND MATCH**

**BUY 3  
GET 1**



**BUY 3** Modern Materials®  
Coprax or Bite Blocks (excludes  
laboratory packs).

**GET 1** at NO CHARGE!

CAMPAIGN#: 1000806521.



Modern Materials® Wax Info

\*Modern Materials® Gypsums are fulfilled with order by dealer. No charge item(s) will be of equal or lesser value. **TO REDEEM ADDITIONAL PRODUCTS:** Purchase products from an authorized Kulzer dealer between 7/1/25 and 9/30/25. Write campaign number on dealer invoice and mail to: Kulzer, Attn: Free Goods Fulfillment, 4315 S. Lafayette Blvd., South Bend, IN 46614, or email to freegoods.NA@kulzer-dental.com. All invoices must be received by 10/31/25. All offers subject to change. Not to be combined with any other offers. Please allow 6-8 weeks from date invoice is received for delivery. **OFFERS EXPIRE:** 9/30/25. ©2025 Kulzer, LLC. All Rights Reserved. **DISTRIBUTED BY:** Kulzer, LLC. 4315 S. Lafayette Blvd., South Bend, IN 46614.