

—Equipped for Aesthetic Mastery



Product Showcase

Dental Practice & Laboratory



KULZER
MITSUI CHEMICALS GROUP

One partner, unlimited potential...

As a preferred partner to dental professionals, we help our customers restore patients' oral health in a safe, more convenient and cost-effective way. Our mission is to develop and provide best-in-class quality products and services that create reliable solutions.

Kulzer has been a proud member of the Mitsui Chemicals Group since 2013. Mitsui is a global supplier of innovative chemical products for the health care, automotive, agriculture, housing and environmental protection sectors.

Kulzer solutions include Venus® composites, Flexitime® and xantasil® impression materials, iBOND® bonding agents, GLUMA® desensitizers, Venus White® teeth whitening, Pala® teeth and Pala denture teeth, cara® Digital Solutions, precious metal refining, and more.



Kulzer Products by Brand

cara Print Cube	30	Pala: Lab Putty, Polish, cre-active	27
cara Print LEDcure / cara Print CleanUp	33	Pala: Palaseal, Palabond, Aislar	28
Charisma: ABC	14	Pala teeth: Mondial i & Mondial, Delara, Artic, Artic Digital, Digital Tooth Library	22-25
dima Print Materials	31	Pala acrylics: Palapress vario, Paladon 65	26
Dynamix Speed 2	17	Precious Metal Refining	35
Flexitime: Xtreme 2, Bite	18	Signum: HiLite Power 3D, HiLite Pre 2, Connector	32
GLUMA: Comfort Bond & Desensitizer	6	Starlight pro	15
iBOND: Universal, Total Etch	7	Venus Direct Restoratives	9-14
Ivory: Rubber Dam, Clamps & instruments	5	Venus Supra	15
Kulzer Workflows	34	Venus Temp 2	16
Modern Materials: Gypsum Dental Stones & Plasters	20	Venus White: Max, Pro, Ultra, Ultra+, Touch Up Brush	8
Modern Materials: Wax	21	VK Solutions: VibraKleen E², VacuKleen E², Dri-Clave	4
Palajet & Palamat Premium	29	xantasil: Alginate Substitute	19

This book showcases our key products, brands and services.
To see Kulzer's complete portfolio, please visit kulzerUS.com.





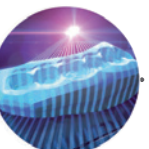
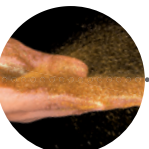


Kulzer Product Portfolio by Indication

CLINICAL

pg. 4	pg. 5	pg. 8	pg. 6	pg. 9-15, 32	pg. 16-19	pg. 30-31	pg. 35
							
Ultrasonic Cleaning	Isolation	Whitening	Preventive	Direct Restorative	Indirect Restorative	CAD/CAM	Precious Metal Refining
VibraKleen <ul style="list-style-type: none"> Tablets Dri-Clave <ul style="list-style-type: none"> Solutions VacuKleen <ul style="list-style-type: none"> Evacuation System Cleaner 	Ivory <ul style="list-style-type: none"> Rubber Dams Clamps Instruments 	Venus White <ul style="list-style-type: none"> In-office Custom Take-home Pre-filled Trays Maintenance 	GLUMA <ul style="list-style-type: none"> Desensitizer 	Venus <ul style="list-style-type: none"> Filling Materials Curing Light Polishing Charisma <ul style="list-style-type: none"> Filling Materials 	Flexitime <ul style="list-style-type: none"> A-Silicone VPS Bite Registration xantasil <ul style="list-style-type: none"> Alginate Substitute Venus <ul style="list-style-type: none"> Temporary Material 	cara <ul style="list-style-type: none"> 3D Printing dima <ul style="list-style-type: none"> Print Resins 	<ul style="list-style-type: none"> Scrap Refining Complementary Shipping Materials Autoship Program

LABORATORY

pg. 20-21	pg. 22-25	pg. 26-27	pg. 29	pg. 30-31	pg. 35
					
Modeling & Work Prep	Denture Teeth	Denture Materials	Devices & Equipment	CAD/CAM	Precious Metal Refining
Modern Materials <ul style="list-style-type: none"> Gypsum Dental Stones & Plasters Dental Waxes 	Pala <ul style="list-style-type: none"> Mondial/Mondial i Delara Artic & Artic Digital Teeth Accessories 	Pala <ul style="list-style-type: none"> Cold Curing Acrylic Heat Curing Acrylic Characterization Finishing 	<ul style="list-style-type: none"> Injection Unit Polymerization Units 	cara <ul style="list-style-type: none"> 3D Printing dima <ul style="list-style-type: none"> Print Resins 	<ul style="list-style-type: none"> Scrap Refining Complimentary Shipping Materials Autoship Program

Ultrasonic Cleaning

VibraKleen E²® Ultrasonic Cleaning Tablets

The natural power of enzymes.

- Powerful protease enzymes quickly remove and breakdown hard-to-clean deposits like blood, bone and food particles that chemical detergents can leave behind.
- Powerful, yet gentle on your equipment.
- Biodegradable and pH neutral.
- Non-toxic, non-corrosive formula contains no chlorine or harsh alkaline that can damage expensive stainless steel equipment.

Dri-Clave® VK Ultrasonic Cleaning Solutions

Powerful cleaning with minimal effort.

- Specially formulated for ultrasonic cleaning.
- Eliminates hand scrubbing of instruments.
- Deep cleans as part of asepsis control program.
- Color coded for easy identification.



VibraKleen E² Ultrasonic Cleaning Tablets are the perfect companion for easily cleaning Ivory® Rubber Dam Clamps and Accessories (Page 6).

*Use tablets to clean hoses, coupler, and U-shaped connectors, not disposable leaves.

VibraKleen E ² Ultrasonic Cleaning Tablets	
VibraKleen E² Enzyme Ultrasonic Tablets Box of 20 (Case Lot 24)	50037100
VibraKleen E² Enzyme Ultrasonic Tablets Clinic Pack–Box of 80 (Case Lot 12)	50037101

VacuKleen E² Evacuation System Cleaner

Cleans with a lemon flash.

- Highly effective powder formula.
- Environmentally friendly and safe to work with.
- Power of protease enzymes.



Dri-Clave VK Ultrasonic Cleaning Solutions*

VK-1 General Purpose Cleaner Non-Ammoniated (Gallon)	50036202
VK-3 Plaster and Stone Remover (Gallon)	50036206
VK-4 Tartar and Stain Remover (Gallon)	50036208
VK-6 Temporary Cement Remover (Gallon)	50036212

*Each VK solution sold in case lots of four (4) gallons only.

VacuKleen E² Evacuation System Cleaner

VacuKleen E² Evacuation Cleaners

Unit Dose Pouch for Quarts Intro Pack –
Box of 60 Pouches (Case Lot 24 x 7 gm)

50036100

VacuKleen E² Evacuation Cleaner

Unit Dose Pouch for Quarts Clinic Pack –
Box of 140 Pouches (Case Lot 12 x 7 gm)

50036101

VacuKleen E² Evacuation Cleaner

Unit Dose Pouch for Gallons Clinic Pack –
Box of 25 Pouches (Case Lot 24 x 28 gm)

50036102

Isolation

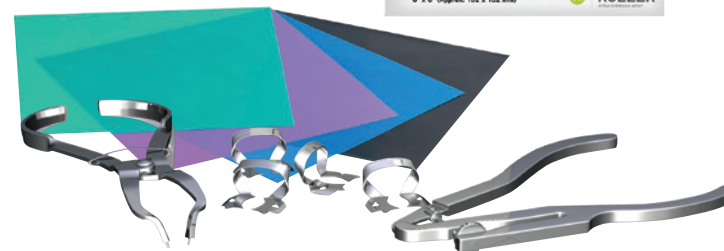
Ivory® Rubber Dam & Clamps

Everything you need to achieve perfect isolation.

- Natural latex and non-latex rubber dam materials available in a range of colors and sizes
- Stainless steel clamps are die-cut, heat-treated, hand-set, and tempered to guarantee secure dam placement

EXPANDED
Product Line

includes Non-latex
and Mint



Ivory Clamps			
Complete Rubber Dam Kit (Punch, Forceps, Rubber Dam, Frame, 8 Clamp Starter Kit, and Template)	50057966	Anterior Clamps	
		Stainless Steel Clamp No. 6	50057382
		Stainless Steel Clamp No. 9	50057384
Rubber Dam Clamp Starter Kit (8 Clamps: 0, 2, 2A, 7, 8A, 9, 14, 14A)	50057968	Tiger Clamps	
		Stainless Steel Clamp No. 1T	50057841
Winged Clamps		Stainless Steel Clamp No. 2T	50057843
		Stainless Steel Clamp No. 2AT	50057847
Stainless Steel Clamp No. 00	50057302	Stainless Steel Clamp No. 9T	50057855
Stainless Steel Clamp No. 0	50057304	Stainless Steel Clamp No. 14T	50057849
Stainless Steel Clamp No. 1	50057306	Stainless Steel Clamp No. 14DT	50057857
Stainless Steel Clamp No. 2	50057310	Stainless Steel Clamp No. 56T	50057853
Stainless Steel Clamp No. 2A	50057312	Wingless Clamps	
Stainless Steel Clamp No. 3	50057322	Stainless Steel Clamp No. W2	50057510
Stainless Steel Clamp No. 4	50057324	Stainless Steel Clamp No. W2A	50057512
Stainless Steel Clamp No. 7	50057328	Stainless Steel Clamp No. W3	50057522
Stainless Steel Clamp No. 8	50057334	Stainless Steel Clamp No. W8A	50057536
Stainless Steel Clamp No. 8A	50057336	Stainless Steel Clamp No. W14A	50057556
Stainless Steel Clamp No. 12A	50057348	Stainless Steel Clamp No. W0	50057504
Stainless Steel Clamp No. 13A	50057352	Stainless Steel Clamp No. W1	50057506
Stainless Steel Clamp No. 14	50057354	Stainless Steel Clamp No. W4	50057524
Stainless Steel Clamp No. 14A	50057356	Stainless Steel Clamp No. W5	50057526
Stainless Steel Clamp No. 56	50057374	Stainless Steel Clamp No. W7	50057528
Stainless Steel Clamp No. 1A	50057308	Stainless Steel Clamp No. W8	50057534
Stainless Steel Clamp No. 5	50057326	Stainless Steel Clamp No. W14	50057554
Stainless Steel Clamp No. 7A	50057330	Stainless Steel Clamp No. 26N	50057728
Stainless Steel Clamp No. 10	50057338	Stainless Steel Clamp No. 27N	50057730
Stainless Steel Clamp No. 11	50057342	Stainless Steel Clamp No. 28N	50057732
Stainless Steel Clamp No. 26	50057370	Stainless Steel Clamp No. W56	50057568
Stainless Steel Clamp No. 27	50057372		

Ivory Rubber Dam

Premium Rubber Dam

Blue Medium 5" x 5"— 52 Sheets	66094058
Blue Medium 6" x 6"— 36 Sheets	66094053
Blue Thin 6" x 6"— 36 Sheets	66094052
Blue Heavy 6" x 6"— 36 Sheets	66094054
Green Mint 5" x 5"— 52 Sheets	66094059
Green Mint 6" x 6"— 36 Sheets	66094055
Non Latex Medium Mint 5" x 5"— 52 Sheets	66094060
Non Latex Medium Mint 6" x 6"— 36 Sheets	66094057
Black 6" x 6"— 36 Sheets	66094056

Instruments

Rubber Dam Products

Rubber Dam Forceps	50057220
Rubber Dam Punch	50057225

Rubber Dam Frames

Adult Frame (6 in)	50057230
Pedo. Frame (5 in)	50057229

Rubber Dam Template

Template 6" x 6"	66095030
------------------	----------

Preventative Solutions



GLUMA® Desensitizer Under every restoration.

For less than \$1 per application, **GLUMA** is the gold standard and the absolute best insurance policy for fast, effective and long-term desensitization and improved patient satisfaction.

- GLUMA provides a hermetic seal that acts as a microbial barrier, inhibiting bacterial growth.
- GLUMA is the only desensitizer proven to penetrate exposed dentinal tubules up to 200µ.
- Resurrects collapsed collagenous fibers, improving adhesive bond strength.



GLUMA® Comfort Bond + Desensitizer Reliable bonding, assured comfort.

Prime, bond and prevent post-operative sensitivity in just one step with zero mixing.

- Can be used with wet and dry bonding techniques.
- Indicated for bonding direct and indirect restorations as well as desensitizing hypersensitive dentition.
- Tried and trusted 5th generation adhesive.



Gluma Desensitizer	
Gluma Desensitizer (5 ml)	65872354
Gluma Desensitizer Clinic Pack (3 x 5 ml)	66018221
Gluma Desensitizer, Single Dose (40 x 0.075 ml)	66001854
Application Brushes 2 Pack (50 Pkg)	66064661

Gluma Comfort Bond + Desensitizer	
Gluma Comfort Bond + Desensitizer (4 ml)	66001710
Gluma Desensitizer Economy Pack (3 x 4 ml)	66018222



Direct Restorative

iBOND® Universal

Every surface. Every indication.
Every technique.

iBOND Universal is the universal, light-curing adhesive for any bonding technique, all indications and is compatible with all dental materials.

- Durable, reliable bond strength.
- For use with all dental materials and all indications.
- No need for a dual cure activator.
- Reduced technique sensitivity.
- Your preferred bonding technique.



iBOND Universal	
iBOND Universal Bottle Refill 1 x 4 ml	66061411
iBOND Universal Bottle Value Pack 3 x 4 ml	66061412
iBOND Universal Single Dose Value Pack	66061419
iBOND Ceramic Primer 1 x 4 ml	66061416

iBOND® Total Etch

Consistent reliability.

iBOND Total Etch is an etch and rinse 2-step adhesive that attains high bond strength to both enamel and dentin while ensuring optimal marginal sealing. It is also ideal for desensitizing hypersensitive areas.

- Clinically proven to provide reliable and consistent bond strength.
- Optimized with nano-filler for improved intrinsic strength.



iBOND Total Etch

iBOND Total Etch Bottle Refill (1 x 4 ml Bottle, 50 Application Tips, IFU and Pictorial Card)	66040094
iBOND Total Etch Bottle Value Pack (3 x 4 ml Bottles, IFU and Pictorial Card)	66039867
iBOND Total Etch Single Dose Refill (50 Single Doses, 50 Application Tips, IFU and Pictorial Card)	66040093
iBOND Total Etch Single Dose Value Pack (100 Single Doses, 100 Application Tips, IFU and Pictorial Card)	66039870



Whitening Solutions

Venus White® Max

Rapid in-office whitening for maximum effect.

Remarkably efficient—accelerate patients' whitening with results in an hour or less.

- Three or four 15-minute treatments with 38% hydrogen peroxide gel.
- Syringe-to-syringe mixing chemically activates the product, ensures a thorough mix and provides maximum freshness.
- Contains potassium nitrate which helps decrease sensitivity associated with bleaching.



Venus White Max

Venus White Max In-Office Kit (2 x 0.96 ml 38% Hydrogen Peroxide, 2 x 0.24 ml Activator, 1 x 1.2 ml Gingival Barrier, 2 x 20 ga Black Mini Tips)	40005211
Venus White Max Light Cure Gingival Barrier (4 x 1.2 ml Syringes, 8 Black Mini Tips)	40005202
Venus White TouchUp Brush	66051761

Venus White® Pro

Customizable take-home whitening solution.

High-performance whitening for custom trays make a patient's smile up to 8.4 shades whiter.*

- Choose from 16%, 22% or 35% carbamide peroxide strengths.
- Contains potassium nitrate which helps decrease sensitivity associated with bleaching.
- Mint flavored for patient comfort.



Venus White Pro

16% Patient Kit (6 x 1.2 ml Syringes, Tray Case, Shade Guide)	40005166
22% Patient Kit (6 x 1.2 ml Syringes, Tray Case, Shade Guide)	40005167
35% Patient Kit (6 x 1.2 ml Syringes, Tray Case, Shade Guide)	40005460
16% Refill Kit (3 x 1.2 ml Syringes)	40005164
22% Refill Kit (3 x 1.2 ml Syringes)	40005165
35% Refill Kit (3 x 1.2 ml Syringes)	40005462
16% 50-Syringe Pack (50 x 1.2 ml Syringes)	40005463
22% 50-Syringe Pack (50 x 1.2 ml Syringes)	40005464
35% 50-Syringe Pack (50 x 1.2 ml Syringes)	40005465
EVA Sheets (25 Sheets x 0.040" thick)	40005203

*Results may vary.

Venus White® Ultra and Venus White® Ultra+

Simple yet smart take-home whitening system.

Easy and convenient entry-level whitening provides unique business opportunities and opens doors to more advanced options.

- Once-a-day treatment for up to seven days.
- Visibly whiter teeth in just three days.
- Contains potassium nitrate for greater comfort
- Each disposable tray is pre-filled with mint-flavored 11.2% or 15% hydrogen peroxide gel.



Venus White Ultra

Venus White Ultra (7 Upper and 7 Lower Pre-filled Trays - 11.2%)	66087538
Venus White Ultra+ (7 Upper and 7 Lower Pre-filled Trays - 15%) *Available in US Only	66087539

These products are not available in Canada.

Direct Restorative



Venus® Pure

Simplify your direct restorative workflow.

Venus Diamond PURE | Venus Pearl PURE

Four shades to seamlessly blend with surrounding tooth structure, Venus PURE resins optimize workflow efficiency without compromising on strength and durability.

- Easy to use; a perfect fit for 90% of daily restorative procedures
- Monochromatic layering to bring simplicity to everyday anterior and posterior restorations

PURE

Venus Pearl PURE Shades – Refills

Venus Pearl PLT Refill 20x0,2G Light	66096876
Venus Pearl PLT Refill 20x0,2G Medium	66096877
Venus Pearl PLT Refill 20x0,2G Dark	66096878
Venus Pearl PLT Refill 20x0,2G Bleach	66096879
Venus Pearl Syringe Refill 1x3G Light	66096880
Venus Pearl Syringe Refill 1x3G Medium	66096881
Venus Pearl Syringe Refill 1x3G Dark	66096882
Venus Pearl Syringe Refill 1x3G Bleach	66096883

Venus Diamond PURE Shades – Refills

Venus Diamond PLT Refill 20x0,25G Light	66096868
Venus Diamond PLT Refill 20x0,25G Medium	66096869
Venus Diamond PLT Refill 20x0,25G Dark	66096870
Venus Diamond PLT Refill 20x0,25G Bleach	66096871
Venus Diamond Syringe Refill 1x4G Light	66096872
Venus Diamond Syringe Refill 1x4G Medium	66096873
Venus Diamond Syringe Refill 1x4G Dark	66096874
Venus Diamond Syringe Refill 1x4G Bleach	66096875



“Look for a composite that is easy to use and avoid a lot of composites: the more composites, the higher the risk of failure.”

- Dr Edoardo Fossati, Torino, Italy



Venus Pearl PURE Shades – Kits

Venus Pearl Pure Kit PLT 20x0.2g PLTs each of Venus Pearl shades Light + Medium; 2g syringe of Venus Bulk Flow ONE; 2ml bottle of iBOND Universal; 5 Flow Cannulas; Translation card; Pictorial card iBOND Universal; IFUs	66098266
Venus Pearl Pure Kit Syringe 3g syringes each of Pearl shades Light + Medium; 2g syringe of Venus Bulk Flow ONE; 2ml bottle of iBOND Universal; 5 Flow Cannulas; Translation card; Pictorial card iBOND Universal; IFUs	66098267

Venus Diamond PURE Shades – Kits

Venus Diamond Pure Kit PLT 20x0.25g PLTs each of Venus Diamond shades Light + Medium; 2g syringe of Venus Bulk Flow ONE; 2ml bottle of iBOND Universal; 5 Flow Cannulas; Translation card; Pictorial card iBOND Universal; IFUs	66098264
Venus Diamond Pure Kit Syringe 4g syringes each of Venus Diamond shades Light + Medium; 2g syringe of Venus Bulk Flow ONE; 2ml bottle of iBOND Universal; 5 Flow Cannulas; Translation card; Pictorial card iBOND Universal; IFUs	66098265



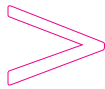
Direct Restorative

Venus® Pearl ART

The ultimate artist's palette.

Formulated for those who require control over even the smallest details, Venus Pearl ART supplies a shapeable, creamy working consistency and a variety of shades to choose from. This is the composite that refuses to compromise where craftsmanship is concerned.

- Ideal for cases with exceptionally high esthetic demands.
- Made with patented TCD-urethane formula for low shrinkage stress and high flexural strength.
- BisGMA and BPA-free.
- Well-suited to fine-detailed work.



**New Packaging.
Same Product.**



Venus Pearl ART PLT – Refills

Venus Pearl Art PLT Refill 20x0,2G A1	66048090
Venus Pearl Art PLT Refill 10x0,2G ODC	66048093
Venus Pearl Art PLT Refill 10x0,2G OXDC	66048094
Venus Pearl Art PLT Refill 10x0,2G OB	66048095
Venus Pearl Art PLT Refill 10x0,2G BL	66048096
Venus Pearl Art PLT Refill 10x0,2G BXL	66048097
Venus Pearl Art PLT Refill 10x0,2G CL	66048098
Venus Pearl Art PLT Refill 10x0,2G AM	66048099
Venus Pearl Art PLT Refill 10x0,2G CO	66048100
Venus Pearl Art PLT Refill 20x0,2G A2	66048141
Venus Pearl Art PLT Refill 20x0,2G HKA2.5	66048142
Venus Pearl Art PLT Refill 20x0,2G A3	66048143
Venus Pearl Art PLT Refill 20x0,2G A3.5	66048144
Venus Pearl Art PLT Refill 20x0,2G A4	66048145
Venus Pearl Art PLT Refill 20x0,2G HKA5	66048146
Venus Pearl Art PLT Refill 20x0,2G B1	66048147
Venus Pearl Art PLT Refill 20x0,2G B2	66048148
Venus Pearl Art PLT Refill 20x0,2G B3	66048149
Venus Pearl Art PLT Refill 20x0,2G C1	66048150
Venus Pearl Art PLT Refill 20x0,2G C2	66048161
Venus Pearl Art PLT Refill 20x0,2G C3	66048162
Venus Pearl Art PLT Refill 20x0,2G D3	66048163
Venus Pearl Art PLT Refill 10x0,2G OLC	66048164
Venus Pearl Art PLT Refill 10x0,2G OMC	66048165
Venus Pearl Art PLT Refill 10x0,2G YO	66048171
Venus Pearl Art PLT Refill 10x0,3G CORE	66048172
Venus Pearl Art PLT Refill 10x0,2G GUM	66048173

Venus Pearl ART SYR – Refills

Venus Pearl Art Syringe Refill 1x3G A1	66048175
Venus Pearl Art Syringe Refill 1x3G A2	66048176
Venus Pearl Art Syringe Refill 1x3G HKA2.5	66048177
Venus Pearl Art Syringe Refill 1x3G A3	66048178
Venus Pearl Art Syringe Refill 1x3G A3.5	66048179
Venus Pearl Art Syringe Refill 1x3G A4	66048180
Venus Pearl Art Syringe Refill 1x3G HKA5	66048181
Venus Pearl Art Syringe Refill 1x3G B1	66048182
Venus Pearl Art Syringe Refill 1x3G B2	66048183
Venus Pearl Art Syringe Refill 1x3G B3	66048184
Venus Pearl Art Syringe Refill 1x3G C1	66048185
Venus Pearl Art Syringe Refill 1x3G C2	66048186
Venus Pearl Art Syringe Refill 1x3G C3	66048187
Venus Pearl Art Syringe Refill 1x3G D3	66048188
Venus Pearl Art Syringe Refill 1x3G OLC	66048189
Venus Pearl Art Syringe Refill 1x3G OMC	66048190
Venus Pearl Art Syringe Refill 1x3G ODC	66048191
Venus Pearl Art Syringe Refill 1x3G OXDC	66048192
Venus Pearl Art Syringe Refill 1x3G BL	66048193
Venus Pearl Art Syringe Refill 1x3G BXL	66048194
Venus Pearl Art Syringe Refill 1x3G OB	66048195
Venus Pearl Art Syringe Refill 1x3G CL	66048196
Venus Pearl Art Syringe Refill 1x3G AM	66048197
Venus Pearl Art Syringe Refill 1x3G CO	66048198
Venus Pearl Art Syringe Refill 1x3G YO	66048199
Venus Pearl Art Syringe Refill 1x3G CORE	66048200
Venus Pearl Art Syringe Refill 1x3G GUM	66048201

Direct Restorative



Venus® Diamond ART

Make every smile a masterpiece.

Venus Diamond ART's easy and convenient handling, extended working time and expansive range of shades support true artistry in every case. This revolutionary nanohybrid composite is highly durable, exhibits low shrinkage stress and polishes with ease.

- Firm, stable and low-stick consistency.
- Extensive range of shades.
- Made with proprietary TCD-urethane formula.
- BisGMA and BPA-free.



Venus Diamond ART PLT – Refills

Venus Diamond Art PLT Refill 20x0,2G A1	66039008
Venus Diamond Art PLT Refill 20x0,2G A2	66039009
Venus Diamond Art PLT Refill 20x0,2G HKA2,5	66039010
Venus Diamond Art PLT Refill 20x0,2G A3	66039011
Venus Diamond Art PLT Refill 20x0,2G A3,5	66039012
Venus Diamond Art PLT Refill 10x0,2G A4	66039013
Venus Diamond Art PLT Refill 10x0,2G HKA5	66039014
Venus Diamond Art PLT Refill 20x0,2G B1	66039015
Venus Diamond Art PLT Refill 20x0,2G B2	66039016
Venus Diamond Art PLT Refill 10x0,2G B3	66039017
Venus Diamond Art PLT Refill 20x0,2G C2	66039018
Venus Diamond Art PLT Refill 10x0,2G C3	66039019
Venus Diamond Art PLT Refill 10x0,2G D3	66039020
Venus Diamond Art PLT Refill 10x0,2G OB	66039024
Venus Diamond Art PLT Refill 10x0,2G BL	66039025
Venus Diamond Art PLT Refill 10x0,2G BXL	66039026
Venus Diamond Art PLT Refill 10x0,2G CL	66039027
Venus Diamond Art PLT Refill 10x0,2G AM	66039028
Venus Diamond Art PLT Refill 10x0,2G CO	66039029
Venus Diamond Art PLT Refill 10x0,2G YO	66039030
Venus Diamond Art PLT Refill 10x0,2G OLC	66046731
Venus Diamond Art PLT Refill 10x0,2G OMC	66046732
Venus Diamond Art PLT Refill 10x0,2G ODC	66046733
Venus Diamond Art PLT Refill 10x0,2G OXDC	66046734

Venus Diamond ART SYR – Refills

Venus Diamond Art Syringe Refill 1x4G A1	66035471
Venus Diamond Art Syringe Refill 1x4G A2	66035472
Venus Diamond Art Syringe Refill 1x4G HKA2,5	66035473
Venus Diamond Art Syringe Refill 1x4G A3	66035474
Venus Diamond Art Syringe Refill 1x4G A3,5	66035475
Venus Diamond Art Syringe Refill 1x4G A4	66035476
Venus Diamond Art Syringe Refill 1x4G HKA5	66035477
Venus Diamond Art Syringe Refill 1x4G B1	66035478
Venus Diamond Art Syringe Refill 1x4G B2	66035479
Venus Diamond Art Syringe Refill 1x4G B3	66035480
Venus Diamond Art Syringe Refill 1x4G C2	66035481
Venus Diamond Art Syringe Refill 1x4G C3	66035482
Venus Diamond Art Syringe Refill 1x4G D3	66035483
Venus Diamond Art Syringe Refill 1x4G BL	66035487
Venus Diamond Art Syringe Refill 1x4G BXL	66035488
Venus Diamond Art Syringe Refill 1x4G OB	66035489
Venus Diamond Art Syringe Refill 1x4G CL	66035490
Venus Diamond Art Syringe Refill 1x4G AM	66035491
Venus Diamond Art Syringe Refill 1x4G CO	66035492
Venus Diamond Art Syringe Refill 1x4G YO	66035493
Venus Diamond Art Syringe Refill 1x4G OLC	66046735
Venus Diamond Art Syringe Refill 1x4G OMC	66046736
Venus Diamond Art Syringe Refill 1x4G ODC	66046737
Venus Diamond Art Syringe Refill 1x4G OXDC	66046738



Venus® Diamond Flow ART

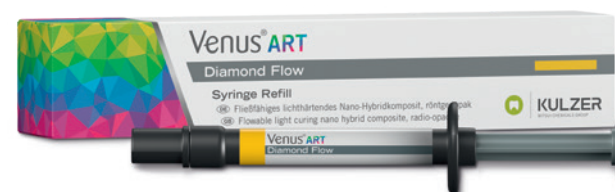
Easy placement meets aesthetic freedom.

Flowable yet firm with flexible aesthetics, Venus Diamond Flow ART offers a versatile range of shades to support a true-to-nature finish. This flowable composite is formulated with Kulzer's proprietary TCD-urethane nanotechnology for low shrinkage stress and high flexural strength.

- Excellent radiopacity.
- Excellent handling.
- Ideal for Class V restorations.
- BisGMA and BPA-free.



**New Packaging.
Same Product.**



Venus Diamond Flow

Venus Diamond Flow Syringe Assortment					
1 x 1.8 gm syringe each of shades A1, A2, A3, and Baseline					66040353
Venus Diamond Flow PLT Assortment					
10 x 0.2 gm each of shades A1, A2, A3, and Baseline					66040367
Shades	Syringe 1.8 gm	PLT 20 x 0.25 gm	Shades	Syringe 1.8 gm	PLT 20 x 0.25 gm
A1	66040354	66040368	HKA5	66040361	66040374
A2	66040355	66040369	B2	66040362	66040375
HKA 2.5	66040357	66040370	OM (Opaque Medium)	66040363	66040376
A3	66040358	66040371	CL(Clear)	66040364	66040377
A3.5	66040359	66040372	BXL (Bleach Extra Light)	66040365	66040378
A4	66040360	66040373	Baseline	66041052	66041051



Direct Restorative

Venus® Bulk Flow ONE

Simplify and streamline restorations.

Venus Bulk Flow ONE saves time with its impeccable shade-matching and efficient handling capabilities. There's only one composite to reach for when you have this flowable, one-shade, bulk-filling composite on hand.

- High flexural strength and high wear-resistance for durability
- Helps simplify inventory
- Ideal for restoring primary teeth



Venus Bulk Flow ONE	
Venus Bulk Flow ONE Syringe Refill w/5 tips	66094723
Venus Bulk Flow ONE PLT Refill (20)	66094724
Venus Bulk Flow ONE Value Kit Syringe (10x2.0g syringes) w/50 tips	66095335
Venus Bulk Flow ONE Value Kit PLT (80xPLT)	66095388

Venus® Pearl ONE and Venus® Diamond ONE

One shade for all.

Venus Diamond/Venus Pearl ONE Shade blends seamlessly into the surrounding dentition, independent of the tooth shade, enabling restorations to simply disappear. The universal composites for everyday restorations offer a new one-shade solution within the Venus family for the majority of everyday cases.

- Non-slump qualities for easy carving and sculpting
- Stable, minimally adhesive, with an extended working time
- Choose your preferred consistency

Creamy, low-stick consistency of Venus Pearl

Firm, low-stick consistency of Venus Diamond



Venus Pearl ONE Shade	
Venus Pearl Syringe Refill ONE (1 x 3 g)	66081836
Venus Pearl PLT Refill ONE (20 x 0.2 g)	66081837

Venus Diamond ONE Shade	
Venus Diamond Syringe Refill ONE (1 x 4 g)	66081838
Venus Diamond PLT Refill ONE (20 x 0.25 g)	66081839



Direct Restorative

NEW

Venus Diamond® Flow PURE

For the ideal restorative workflow.

Everything you love about Venus Diamond Flow in a simplified shade range to optimize the efficiency of restorative procedures.

- Excellent radiopacity.
- Patented TCD-urethane formula.
- Thixotropic handling for easy control.
- Just 4 shades to choose from.



Venus Diamond Flow PURE

Venus Diamond Flow PURE SYR 1x1.8g Light	66100268
Venus Diamond Flow PURE SYR 1x1.8g Medium	66100269
Venus Diamond Flow PURE SYR 1x1.8g Dark	66100270
Venus Diamond Flow PURE SYR 1x1.8g Bleach	66100271
Venus Diamond Flow PURE PLT 20x0.2g Light	66100272
Venus Diamond Flow PURE PLT 20x0.2g Medium	66100273
Venus Diamond Flow PURE PLT 20x0.2g Dark	66100274
Venus Diamond Flow PURE PLT 20x0.2g Bleach	66100275

Charisma® ABC

Economic simplicity.

Charisma ABC is a new hybrid composite that allows natural restorations with minimal effort. Its shade selection, creamy consistency and easy polishing make Charisma ABC your go-to composite for every restoration. Enjoy the following benefits with your simple yet trusted restorative solution from Kulzer:

- Easy application.
- A brand you can trust.
- Savings you can count on.



Charisma ABC

Shades	Syringe 1 x 4 gm	PLT 20 x 0.2 gm
A1	66064772	66064780
A2	66064773	66064791
A3	66064774	66064792
A3.5	66064775	66064793
A4	66064776	66064794
B2	66064777	66064795
C2	66064778	66064796
Opaque	66064779	66064797



Direct Restorative Accessories

Venus® Supra

Long-lasting, high gloss polishers.

Use **Venus Supra** for polishing all types of composites—in just two steps—to achieve long-lasting, high gloss polishing effects for naturally beautiful composite restorations. Additionally, Venus Supra polishers achieve extremely low surface roughness, reducing plaque accumulation and pigmentation over time.

- Silicone polishers highly filled with microfine diamond powder.
- Available in 5 different shapes: Cup, Disk, Flame, Large Cup, Large Flame.
- Autoclavable and latex-free.



Starlight Pro curing light

Safe and effective polymerization.

An LED curing light for the polymerization of light curing dental material such as adhesives and filling materials, Starlight pro supports the safe placement of consistently high-quality restorations in a dominant wave range of 440-465 nm.

- Power density 1400 mW/cm²
- Sterilizable, fibre optics conductor, Ø8 mm
- Silent operation—zero heat production eliminates need for a fan
- Smooth, continuous and compact body supports ideal disinfection
- 120 minute charge time
- Single charge supports 320 cycles of 10-second mode
- Constant light power regardless of charge level



Venus Supra

Venus Supra Intro Kit (5 Pre + 5 Gloss Polishers)	66087541
Twist Polishers (10 pack)	
Venus Supra Refill Pre Twist Disc	66093899
Venus Supra Refill Gloss Twist Disc	66093900
Venus Supra Refill Pre Twist Brush	66093901
Venus Supra Refill Gloss Twist Brush	66093902
Refills (10 pack)	
Venus Supra Refill Pre Cup (10 polishers: One shape as pre-polishers)	66093893
Venus Supra Refill Gloss Cup (10 polishers: One shape as gloss polishers)	66093894
Venus Supra Refill Pre Flame (10 polishers: One shape as pre-polishers)	66093895
Venus Supra Refill Gloss Flame (10 polishers: One shape as gloss polishers)	66093896
Venus Supra Refill Pre Large Flame (10 polishers: One shape as pre-polishers)	66093897
Venus Supra Refill Gloss Large Flame (10 polishers: One shape as gloss polishers)	66093898
Venus Supra Refill Gloss - Twist Brush	66093902
Venus Supra Refill Gloss - Twist Disc	66093900
Venus Supra Refill Pre - Twist Brush	66093901
Venus Supra Refill Pre - Twist Disc	66093899

Curing Light

Starlight pro – US	66096830
Accessories	
Light Guide, 8 mm 45°	66096929
Light Guide, 8 mm 70°	66057365
Glare Shield, Orange	66016455
Power Cable US	66097173
Hand Piece Incl. Rechargeable Battery	66097169
Charging Unit	66097170

Indirect Restorative



Venus® Temp 2

For seamless transitions.

A unique formula that provides the ideal combination of strength, hardness and flexibility, **Venus Temp 2** offers a perfect temporary restoration that will satisfy both dental professionals and their patients.

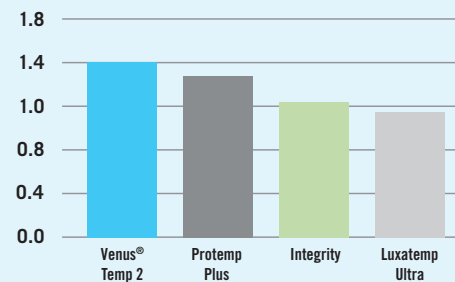
- Nano-particle formula for a brilliant, esthetic high gloss finish.
- Exceptional wear resistance and flexural strength.
- Optimal flowability for easy handling and application.



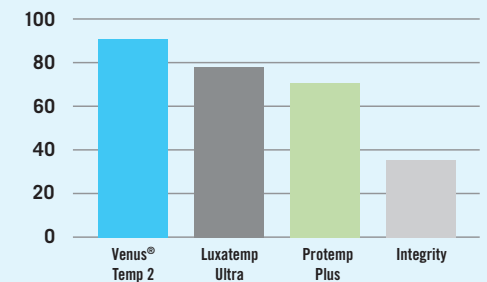
Venus Temp 2	
Shades	50 ml Cartridge & 12 Mixing Tips
A1	66049181
A2	66049182
A3.5	66049183
B1	66049184
Bleach	66049185
Accessories	
Dispensing Gun 10:1	66036083
Mixing Tips Refill (50)	66036082

Venus Temp 2 is not available in Canada.

Fracture Toughness (MPa)



Fracture Strength (N)



In a study with Tufts University, Venus Temp 2 was proven to excel when compared against the leading competitors in both Fracture Toughness and Flexural Strength. Source: Tufts University of Dental Medicine.

Indirect Restorative



Flexitime® VPS

The perfect fit. Every time.

Flexitime combines over ten years of market experience with the outstanding performance and features of a precision impression material.

- Reliable impressions even in adverse conditions.
- Exceptional toughness prevents tearing and distortion.
- Advanced ThermoSense Technology: Flexitime's unique chemistry reacts to the warmer temperatures in a patient's mouth, allowing for variable working times.



Flexitime® Dynamix® speed Automatic Mixing Machine

The perfect mix. Every time.

Dynamix speed offers all of the advantages of automatic mixing, and most importantly, it saves the practice time.

- Void free mixing ensures precision and accuracy.



Flexitime VPS Impression Material

Easy Putty (1 x 600 ml)	50034802
Heavy Tray (1 x 2 x 50 ml Cartridges with Mix Tips)	50034804
Monophase (1 x 2 x 50 ml Cartridges with Mix Tips)	50034811
Medium Flow (1 x 2 x 50 ml Cartridges with Mix Tips)	40005041
Correct Flow (1 x 2 x 50 ml Cartridges with Mix Tips)	50034806
Light Flow (1 x 2 x 50 ml Cartridges with Mix Tips)	40005040
Accessories	
Mix Tips 4.2mm Yellow (48 Count)	66001988
Mix Tips 6.5mm Green (48 Count)	66001989
Intraoral Tips, Yellow (96 Count)	66000782
Intraoral Tips, Clear (96 Count)	65687514
Universal Silicone Adhesive (10 ml)	65607758
Dispensing Gun 2 (2:1/1:1)	66001970

Flexitime Dynamix

Flexitime Dynamix Speed 2 Automatic Mixing Machine	66093756
Flexitime Dynamix Heavy Tray Refill (2 x 380 ml)	40003991
Flexitime Dynamix Monophase Refill (2 x 380 ml)	40003990
Flexitime Dynamix Putty Refill (2 x 380 ml)	40003992
Accessories	
Dynamix Mixing Tips (1 x 50)	40004353
Dynamix Fixation Ring (1 x 2)	66047385
Dynamix Wall Mounting Plate	66033825
Memoreg 2 1 X (2 X 50 ML)	50035517
Memosil 2 Bite Registration 2x50ml	50035018

Indirect Restorative

Flexitime® Xtreme 2

Fast and flexible.

Achieve efficiency with a 30- to 90 - second working time, perfectly suited for more common single unit impressions.

- Enhanced physical properties for increased hydro-phility, improved tear strength and greater toughness.
- Save time with a short intraoral set time of 90 seconds.
- Advanced thermasense technology that allows for variable working times.



Flexitime Xtreme 2 Fast Set

Flexitime Xtreme 2 Heavy Tray Bulk (12 x 50 ml Heavy Tray cartridges, 36 mix tips)	66044884
Flexitime Xtreme 2 Heavy Tray Refill (6 x 50 ml Heavy Tray cartridges, 18 mix tips)	66044885
Flexitime Xtreme 2 Trial Kit (4 Heavy Tray 50 ml cartridges, 2 Correct Flow 50 ml cartridges, 18 mixing tips, and 12 intraoral tips)	66044893
Flexitime Xtreme 2 Correct Flow Refill (6 x 50 ml Correct Flow cartridges, 18 mix tips)	66050334
Flexitime Xtreme 2 Correct Flow Bulk (12 x 50 ml Correct Flow cartridges, 36 mix tips)	66050335
Flexitime Xtreme 2 Dynamix Heavy Tray (2 x 380 ml Heavy Tray Dynamix machine cartridges)	66065537



Flexitime® Bite

The foundation for accurate results.

Flexitime Bite delivers exceptional accuracy for standard bite registrations and superior powder-free scannability and optimization.

- Sets fast in just 30 seconds.
- Extremely high shore D hardness of 40.
- Whipped cream-like consistency ensures exceptional accuracy.



Flexitime Bite

Flexitime Bite Refill (2 x 50 ml cartridges and 6 mix tips)	50066038
Memosil 2 Bite Registration (2 x 50 ml)	50035018
Memoreg 2 1 X (2 X 50 ml)	50035517



Indirect Restorative



xantasil® Alginate Substitute

The smart alternative to alginate.

Specifically designed for the requirements of anatomical impressions and features long-term dimensional stability, void-free mix quality, hygienic processing, easy disinfection, optimized gypsum pouring behavior and easy handling at every step in the process.

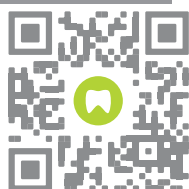
Indications include:

- Impressions for temporaries
- Splints
- Orthodontic models
- Whitening trays
- Opposing jaw models



"I have relied upon Kulzer Flexitime impression materials for years. For me, the choices of viscosities provided and the accuracy that they achieve are unsurpassed. Plus, the fact that the materials start to set when placed intraorally but allow enough working time every time makes them very efficient. I swear by them."

Shannon Pace Brinker, CDA
Virginia Beach, Virginia



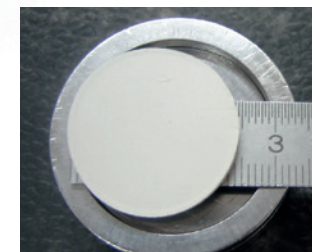
Impressive dimensional stability



Reference form with ruler.



xantasil® shrinkage behavior after several weeks.



Leading alginate competitor shrinkage behavior after 24 hours.

Source: Kulzer R&D. Storage conditions in accordance with ISO 4823. Data available.

Product	Mixing time (sec)	Working time (mins)	Time in mouth (mins)	Deformation under pressure (%)	Shore A hardness
xantasil Dynamix Fast Set	auto	01:00	01:30	5	50
xantasil Cartridge Fast Set	auto	01:00	01:30	7	45

Xantasil Fast Set

xantasil Dynamix Refill (2 x 380 ml)	66052101
xantasil Cartridge Refill Fast Set (6 x 50 ml)	66052102
xantasil FS Cartridge Bulk Pack (50 x 50 ml)	66067514

Modeling Solutions

Modern Materials® Gypsum, Dental Stone & Plaster

Trusted consistency. Unrivaled value.
Reliable performance. Assured quality.

Modern Materials Dental Stones and Plasters are made from high grade gypsum, a naturally-occurring mineral known for centuries for its ability to bind thoroughly.

- Consistent results ensured by the quality, performance and value built into every gypsum product.
- Made from only the finest raw materials.
- Rigid manufacturing standards ensure reliable consistency in every batch of finished products.



Die Stones	
Die-Keen®	
Die-Keen Green 25 lb. Carton	50046578
Die-Keen Pink 25 lb. Carton	50046560
Die-Keen Blue 25 lb. Carton	50046565
Die-Keen Ivory 25 lb. Carton	50046615
Die-Keen Green 45 lb. Carton	50046580
Die-Keen Pink 45 lb. Carton	50046590
Die-Keen Blue 45 lb. Carton	50046585
Die-Keen Ivory 45 lb. Carton	50046635
Die-Keen Green Box 60 gm Pouches	50046502
Die-Keen Green Box 120 gm Pouches	50046507
Die-Keen® Resin Reinforced	
Die-Keen Resin Reinforced 25 lb. Blue	50046750
Die-Keen Resin Reinforced 25 lb. Lt. Buff	50046950
Die-Stone	
Die-Stone Peach 25 lb. Carton	50046674
Die-Stone Peach 45 lb. Carton	50046675

Model Stones	
Denstone	
Denstone Golden 25 lb. Carton	50046175
Denstone White 25 lb. Carton	50046172
Denstone Golden 45 lb. Carton	50046185
Denstone Pink 45 lb. Carton	50046183
Denstone White 45 lb. Carton	50046182
StatStone®	
StatStone 25 lb. Carton	50046860
StatStone Box (24 each) 120 gm Pouches	50046865
O-67 White Orthodontic Stone	
O-67 25 lb. Carton	50046972
O-67 45 lb. Carton	50046952
Labstone	
Labstone Buff 25 lb. Carton	50046277
Labstone Blue 25 lb. Carton	50046279
Labstone Buff 45 lb. Carton	50046287
Labstone Blue 45 lb. Carton	50046289
Labstone Green 45 lb. Carton	50046288
Labstone Buff Fast Set 45 lb. Carton	50046265
Modern Flow	
Modern Flow 25 lb. Carton	66066834
Modern Flow 45 lb. Carton	66066833

Plasters			
Orthodontic Plaster			
Ortho 25 lb. Carton			50048170
Ortho 45 lb. Carton			50048180
Lab Plaster			
Lab Plaster Regular 25 lb. Carton			50048472
Lab Plaster Fast 25 lb. Carton			50048512
Lab Plaster Regular 45 lb. Carton			50048452
Lab Plaster Fast 45 lb. Carton			50048552
Pumice			
Pumice	8 lb. Tub	10 lb. Tub	45 lb. Carton
Pumice, Flour		50049140	50049150
Pumice, Fine – “FF” Grit		50049240	50049250
Pumice, Medium – “F” Grit		50049340	50049350
Pumice, Coarse – “O-1/2” Grit	50049440		50049450
Pumice, X-Coarse – “1/2” Grit			50049550



Modeling Solutions

Modern Materials® Wax

The standard in quality, versatility, consistency and reliability.

- Made from beeswax and organic waxes collected from trees in South America.
- Created with a higher percentage of organic waxes which allows for the wax to boil out cleanly.
- Rigorous testing in highly controlled facilities ensures consistent results.



Base Plate Waxes		
Shur Wax® Pink		
1 lb. Box		50093112
5 lb. Box		50093152
Shur Wax® X-Hard Pink		
1 lb. Box		50093212
5 lb. Box		50093252
Modern Pink No. 3		
1 lb. Box		50093312
5 lb. Box		50093352
Thin-Ex Wax .040 Gauge Pink		
1 lb. Box		50093712



Bite Blocks Pink		
Trial Package (12 Blocks Hard)		50095492
Trial Package (12 Blocks Soft)		50095592
Laboratory Package (120 Blocks Hard)		50095892
Laboratory Package (120 Blocks Soft)		50095992
Utility Strips & Square Ropes		
Utility Wax Strips		
Large (75 Strips Red)		50094193
Large (75 Strips White)		50094191
Small (114 Strips Red)		50094293
Small (114 Strips White)		50094291
Utility Wax Square Ropes		
Box (55 Ropes Red)		50094493
Box (55 Ropes White)		50094491
Box (286 Ropes Red)		50094593
Box (286 Ropes White)		50094591

Boxing Wax		
"Regular" Red 1 lb. Box		50094693
"X-thin" Red 1 lb. Box		50094793
Yellow Bite Wax		
1 lb. Box		50093614
5 lb. Box		50093654
Check Bite Wafers		
Trial Package (48 Wafers)		50095094
Economy Package (192 Wafers)		50095194
Surgident® Coprwax		
Box of 84 Per Package		50092178
Surgident® Periphery Wax		
Box of 60 Sticks		50092189

Denture Teeth

Pala® Mondial® i & Mondial®

Highest aesthetic for the highest demands.

Mondial and Mondial i denture teeth are made with patented Flexecure® for the highest abrasion resistance.

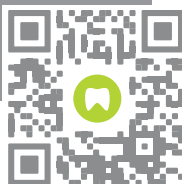
- Manufactured with unique INCOMP (injection + compression process) for strength and durability.
- Increased transparency, enhanced incisal edges, lifelike optical properties and 3D multi-layering for the most natural aesthetic.
- Larger volume and broader neck perfect for concealing implants.
- Mondial and Mondial i can be mixed and matched for flexibility and customization.



"Kulzer's products have been predictably dependable, taking the guesswork out of prosthesis fabrication. My favorite line of teeth is Mondial 6i, they offer great incisal transparency and a natural appearance. The posterior teeth are great because I trust this outstanding company."

"I continue to create smiles using Kulzer products because I trust this outstanding company."

Samantha Grayson, CDT
Virginia Beach, Virginia



Mondial i & Mondial – 50% better wear than conventional PMMA materials.



Pala Denture Teeth

Pala Denture Teeth

See sales representative or kulzerUS.com for item numbers.

Mondial & Mondial i Shade Guide

66040261

Denture Teeth



Delara®

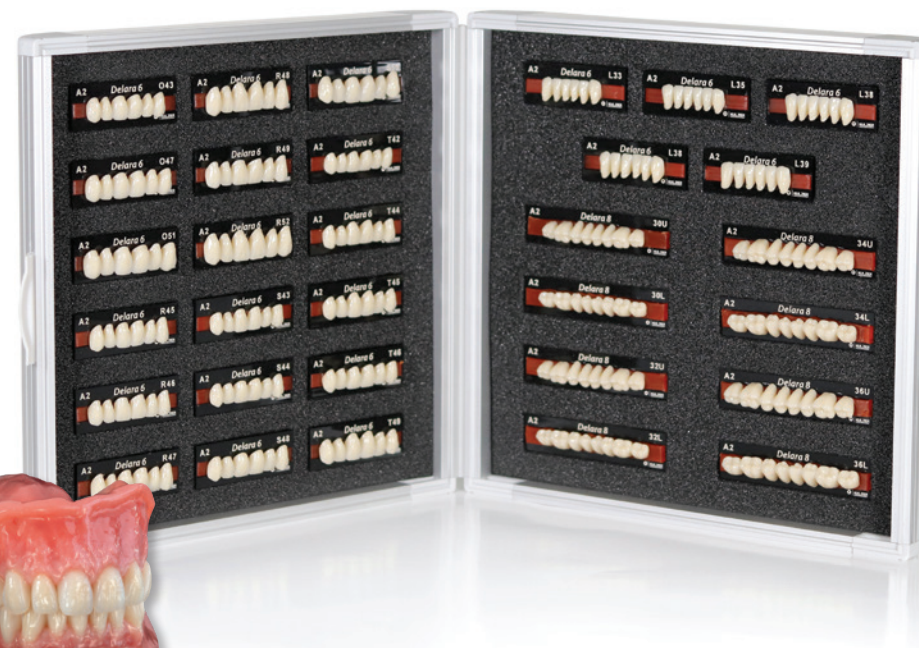
The best of both performance and value.

Delara is the versatile midclass line that delivers the perfect blend of value and lifelike aesthetics.

- Modern, vivid multi layering and dynamic light refraction
- Designed for easy setup and enhanced productivity
- Optimized selection of universal moulds for streamlined inventory



SILVER
Mid-class



Pala Denture Teeth

Pala Denture Teeth

See sales representative or kulzerUS.com for item numbers.

Delara Shade Guide

66077200

Denture Teeth

Artic®

Economical, aesthetically pleasing with superior function.

Artful multilayered structure allows exact matching of reflection curves in natural teeth.

- Widest range of moulds with 4 different posterior angulations
- Perfect occlusion for even distribution of masticatory load
- Fast and easy setup



Artic® Digital

Digitally produced teeth for replicable and reliable results.

Artic Digital teeth are perfect for temporary or economical prosthetics, usable in traditional and digital workflows.

- Analog or digital fabrication.
- Based on our most popular Artic moulds.
- Manufactured using CAD/CAM technology for precision and stability.

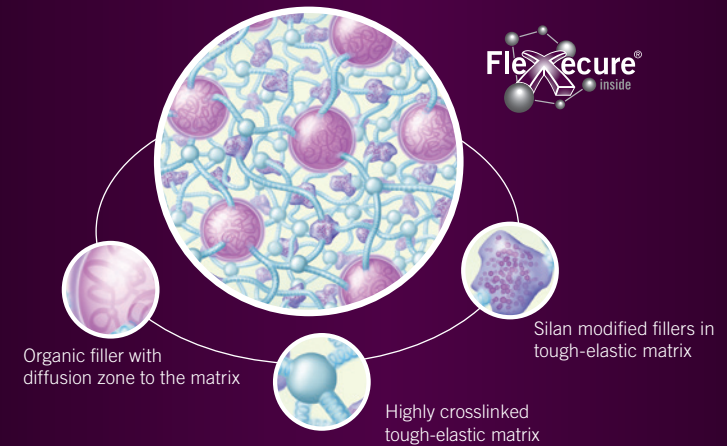


Three Secrets of Prosthetics Perfection



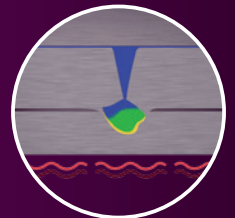
Longevity

Patented **Flexecure®** material makes denture teeth durable and highly resistant to fracture and abrasion.



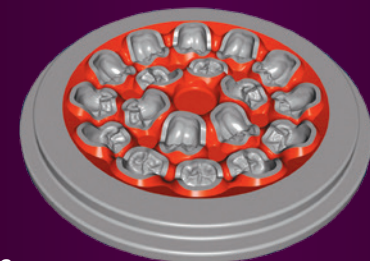
Consistency

The **INCOMP** process prevents porosities and inclusions and ensures consistent density in every tooth.



Precision

CAD/CAM allows replication of Mondial® and Mondial® i teeth with the utmost precision to guarantee matching pairs and perfect intercuspation.



Denture Teeth

The Kulzer Digital Tooth Library

For fast and accurate digital denture production.

Simplify your digital prosthetic workflow with pre-set tooth parameters that support the precise digital setup and production of dental prosthetics.

- Variety of tooth molds to suit each patient case.
- Available at no charge to users of AvaDent, Exocad, Dentca Design Studio, and 3Shape software for the digital setup and production of monoblocks and teeth-in-arch.
- 3Shape and Exocad users have the option to obtain a special license to manufacture bridged and individual teeth.



Tooth Cabinet with Complimentary Tooth Setup

Save time. Let us label and set it up for you.



Living Mould Guides

Easy, quick and systematic tooth selection for every case.



Shade Guides

Compare tooth shades side by side to ensure consistent and optimal shade selection.



Make a good thing even better.

Streamline your digital workflow with simplified ordering...

Use the Pala® Easy Scan system with our complimentary barcode scanner for the easy, seamless ordering of the teeth you need.



Which Libraries Can You Access?

	Mondial i	Mondial	Mondial i 5°	Delara	Artic Digital
	Pala Mix & Match System				
3shape	✓	✓	✓	✓	✓
exocad		✓	✓	✓	✓
AVA DENT		✓	✓		
DENTCA	✓	✓	✓		✓

Pala Denture Teeth

Digital Tooth Library

Contact your sales representative.



Palapress® vario

The classic cold-curing denture acrylic.

- **Palapress vario** is an injectable/pourable self-curing denture acrylic with extended processing time.
- Easy to use, especially in combination with the **Palajet** Injection Unit.
- Available in six shades.



Palapress vario

Palapress vario Liquid (500 ml)	64707864
Palapress vario Powder (1 kg Shade Pink #1)	64707889
Palapress vario Powder (1 kg Shade 200 #8)	64712343
Palapress vario Powder (1 kg Shade Clear #7)	64707892
Palapress vario Powder (1 kg Shade Light Pink #11)	64714796
Palapress vario Powder (1 kg Shade Pink Veined #3)	64707891
Palapress vario Powder (1 kg Shade R50 Veined #4)	64707893

Paladon® 65

The legendary heat-curing denture base material.

- Its well-balanced properties make it economical to use and guarantee high quality dentures at reasonable prices.
- Low shrinkage.
- Available in four shades.



Paladon 65

Paladon 65 Liquid (500 ml)	64707674
Paladon 65 Powder (1 kg Shade Clear #7)	64707710
Paladon 65 Powder (1 kg Shade Pink #1)	64707706
Paladon 65 Powder (1 kg Shade Pink Veined #3)	64707708
Paladon 65 Powder (1 kg Shade R50 Veined #4)	64707711

Denture Materials



Pala® Lab Putty

Fast and precise.
Two hardness options.

- Easy 1:1 mixing, no shrinkage.
- Highly reproducible detail.



Pala Lab Putty	
Lab Putty - Shore 90 Light blue 2 x 1.5 kg	66057432
Lab Putty - Shore 90 Light blue 2 x 5 kg	66057433
Lab Putty - Shore 65 Pink 2 x 1.3 kg	66057434
Lab Putty - Shore 65 Pink 2 x 4.5 kg	66057435

Pala® Polish

Achieve a high shine and remove scratches in one step.

- Simultaneously removes scratches and leaves a high shine on appliances.
- Minimized need for pumice.
- Reduced polishing times.



Pala Polish	
Pala Polish Cream 80 gm	66067855

Pala® cre-active®

Light-curing colorfluid system.

- **Pala cre-active** is the light-curing colorfluid system for the characterization of dentures and the creation of a more natural, personalized appearance.
- Ideal for the characterization of printed dentures.
- Various colors and consistencies available as a
- Recommended to use Signum Connector (see page 32) as bonding agent when used for analog dentures.

Pala cre-active refills sold as 3 gm syringes.



Pala cre-active

Pala cre-active (set)

12 x 3 gm Pala cre-active (white, polar, pink, red, maroon, black, gum, gingiva pink, gingiva shade 200, gingiva R50, gingiva light pink, gingiva clear) syringes
1 Pala cre-active Shade Guide
1 brush
20 cannulas (metal)
5 cannulas (plastic)

66033445	Pala cre-active Refill - white	66033447
	Pala cre-active Refill - polar	66033448
	Pala cre-active Refill - pink	66033449
	Pala cre-active Refill - red	66033450
	Pala cre-active Refill - maroon	66033461
	Pala cre-active Refill - black	66033462
	Pala cre-active Refill - gingiva pink	66033463
	Pala cre-active Refill - gingiva shade 200	66033464
	Pala cre-active Refill - gingiva R50	66033465
	Pala cre-active Refill - gingiva light pink	66033466
	Pala cre-active Refill - gingiva clear	66033467
	Pala cre-active Refill - gum	66033468



Denture Materials

Palaseal®

Light-curing sealant for optimum protection.

Palaseal helps your dental prostheses last longer by protecting them from plaque, food stains and odors. This layer sealant adheres to all denture acrylics and temporary crowns and bridges and prevents plaque and food residues from adhering to the prostheses. With Palaseal, patients can enjoy wearing an aesthetically and functionally durable restoration.

The advantages:

- Provides high surface hardness and abrasion resistance
- Resistant to solvents in denture cleaners
- Adheres well to all denture acrylics
- Forms a long-term bond with denture acrylics
- Leaves a smooth finish



Palabond®

For a reliable bond between denture and acrylic teeth.

- Functional and durable dentures need a stable and secure bond between the denture material and the denture teeth.
- When used consistently, Palabond transparent bonding agent prevents denture teeth from breaking off.
- Additionally, Palabond increases the bond between denture teeth and denture base, as well as the bond between repair material and base material.



Aislar®

The alginate-based universal separating solution.

Successful separation gets every denture off to a good start. Aislar is the separating solution that meets the key requirements of both heat and cold-curing acrylics:

- Allows for perfect separation of acrylics and gypsum, and composite and gypsum
- Leaves smooth surfaces
- Unimpaired curing of denture surfaces
- High precision (no layer forming)
- Short drying time
- Long shelf life



Pala Accessories

Palaseal Unit package 2 x 15 ml	64708063
Aislar 80 ml bottle	64708055
Aislar 2 x 1000 ml bottle	64708058
Palabond 45 ml bottle	64708082

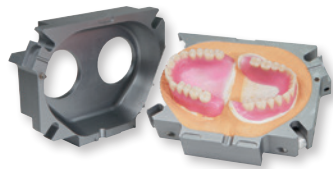
Denture Equipment



Palajet®

Denture innovation—
evolved.

- Precision engineering for injection denture fabrication.
- Palajet dentures offer a superb fit, perfect occlusion and the ultimate in esthetics.
- For injection of heat-curing and cold-curing acrylics.



Palamat Premium®

Smaller on the outside, smarter on the inside.

Bigger-on-the-inside, **Palamat Premium** is the water-bath pressure pot that's perfect for nearly any polymerization task. Although designed to take up less space on the counter, **Palamat Premium** has an impressive interior capacity that can fit one large articulator or up to six dentures at one time.

- Exterior design protects display from water
- Display includes color-coded programs
- Temperature, pressure and time are always visible
- 40–90°C temperature range



Palajet

Palajet System (Palajet Injection Unit, Palamat elite, 1 kg of PalaXpress ultra w/ liquid, Palabond, Aislar and the accessories included with the Palajet injection unit)	50726601
--	----------

Palajet Injection Unit (Mixing Bowl, Spatula, Multiple Injection Cylinder, Duoflask, Flask Carrier, PalaXpress Plastic insert, Sprue Wax and Dosing Cup)	66020450
---	----------

Palajet Accessories

Palajet Single Flask	64710524
-----------------------------	----------

Palajet Duoflask	64715798
-------------------------	----------

Palajet Mixing Bowl	64708088
----------------------------	----------

Palajet Multiple Injection Cylinder	64710527
--	----------

Dosing Cup	64710521
-------------------	----------

Palamat Premium

Palamat Premium pressure curing unit	66076558
---	----------

Palamat flask tray with pins	66056911
-------------------------------------	----------

Digital Solutions

cara® Print Cube

More productivity, more precision.

Unlock new possibilities in productivity and precision with the cara Print Cube, Kulzer's latest innovation in 3D printing. This competitively priced unit features an expanded base to fit more dental models and a validated system to ensure uncompromising performance.

- Exceptional precision to capture even the finest details
- 6K high-resolution capacity and 34 µm accuracy
- Competitively priced for cost-effective 3D printing
- Compatible with dima Print materials

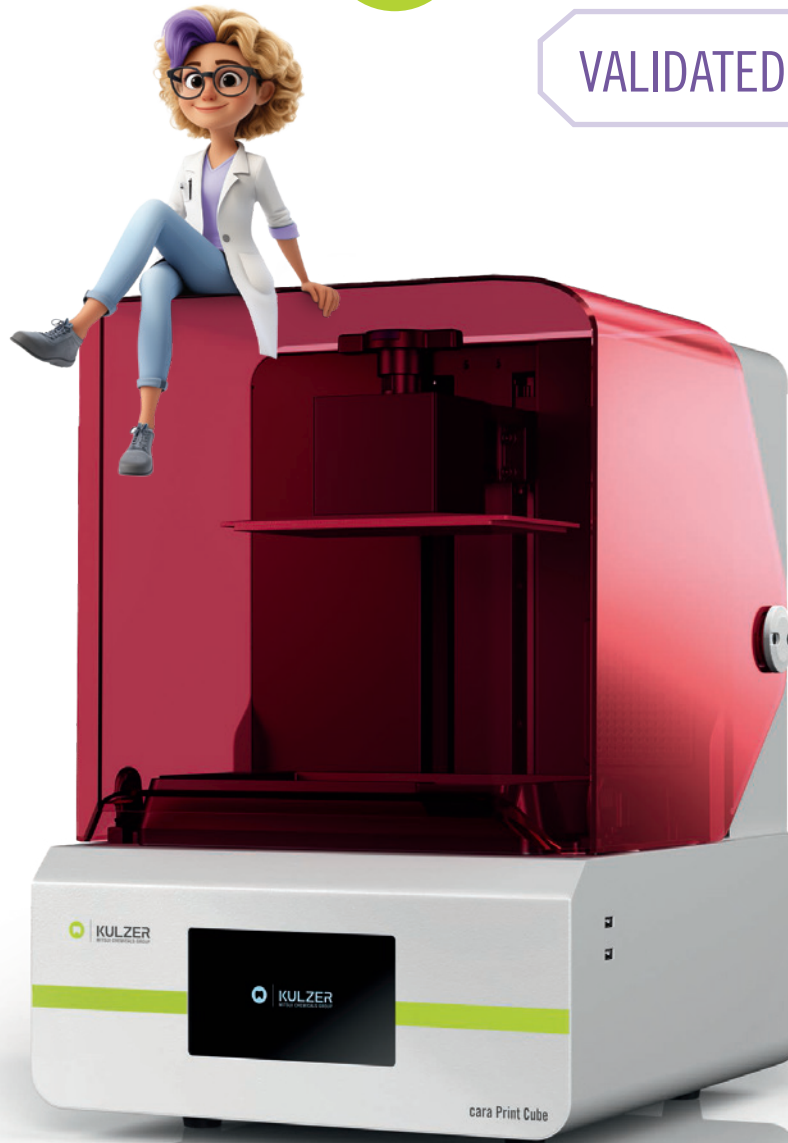
BIGGER BUILD AREA

FIT UP TO 5 DENTAL
MODELS AT THE SAME TIME



NEW!

VALIDATED SYSTEM





dima® Print Materials

Fine-tuned 3D printing resins.

Kulzer combined its longstanding materials expertise with deep knowledge of 3D printing to create **dima Print** materials. All materials are based on decades of research – including those specifically designed for the modern digital workflow.

dima Print materials are light-curing monomeric liquids specially optimized for 3D printing and the requirements of dental applications. When used together with your cara Printer and post-curing unit, technicians benefit from a comprehensive 3D-printing system designed for speed, reliability and value.



Printer and accessories

cara Print Cube	66099964
cara Print LED Cure	66078521
cara Print Cube Resin Tank	66099965
cara Print Cube Build Platform	66099975
cara Print Cube Release Film Kit	66099971

dima Print materials (1000 gm bottles)

dima Print Stone (beige)	66077913
dima Print Stone (gray)	66080023
dima Print Stone (teal)	66081650
dima Print Surgical Guide & Tray	66081915
dima Print Cast Ruby	66081664
dima Print Gingiva Mask	66077884
dima Print Splint Clear (transparent)	66077916
dima Print Denture Base Try-in (White)	66081666
dima Print Denture Base Light Reddish Pink	66081670
dima Print Denture Base Light pink	66081671
dima Print Denture Base Original pink	66081672
dima Print Denture Base Dark pink	66081673
dima Print Denture Teeth - A1	66081674
dima Print Denture Teeth - A2	66081675
dima Print Denture Teeth - A3	66081676
dima Print Denture Teeth - A3.5	66081677
dima Print Denture Teeth - B1	66081678
dima Print Denture Teeth - B2	66081679
dima Print Denture Teeth - BL1	66087415
dima Print C&B Temp - A1	66087416
dima Print C&B Temp - A2	66087417
dima Print C&B Temp - A3	66087418
dima Print C&B Temp - A3.5	66087419
dima Print C&B Temp - B1	66087420
dima Print C&B Temp - B2	66087421
dima Print C&B Temp - BL1	66087423



Light Polymerizing Accessories

Signum® HiLite® Power 3D

The all-rounder light curing unit.

Signum HiLite Power 3D makes curing easy with a user-friendly design and a powerful and long-lasting flashlamp. It includes a second-time mode for both composite and 3D materials, and offers six light-curing time options: 6, 90 and 180 seconds for veneering materials and 5, 10 and 15 minutes for 3D print materials.



Signum® Connector

Light-curing bonding agent for a finish that lasts.

Signum connector allows you to shade and shape individual prosthetic teeth and add characterization to acrylics by ensuring a secure bond between the acrylic and the light-curing veneering materials.



Works great
with cre-active
See page 27

Signum® HiLite® Pre 2

Pre-polymerization lamp with mobile charging unit.

HiLite Pre 2 provides LED light technology with modern design for rapid and professional pre-polymerization* of flowable composites. Use for a wide variety of indications in the fields of acrylic prosthetics and veneering.

* For final polymerization, an additional device is required, e.g. Signum HiLite Power 3D.



Signum	
Signum HiLite Power 3D	66069514
Signum HiLite Pre 2 curing unit	66059751
Signum Connector	64714211



cara® Print LEDcure

Post-curing for 3D printed materials.

cara Print LEDcure creates a stable thermal environment to ensure complete bond formation and to prevent restorations from coming out sticky. This curing device fits up to five models in its large chamber and gives you control over the time, temperature and LED-intensity settings.

- Transparent turntable and fan-assisted heater ensure homogenous results with no need to flip objects
- Includes preset illumination programs for **dima Print Materials**
- 1-year warranty included



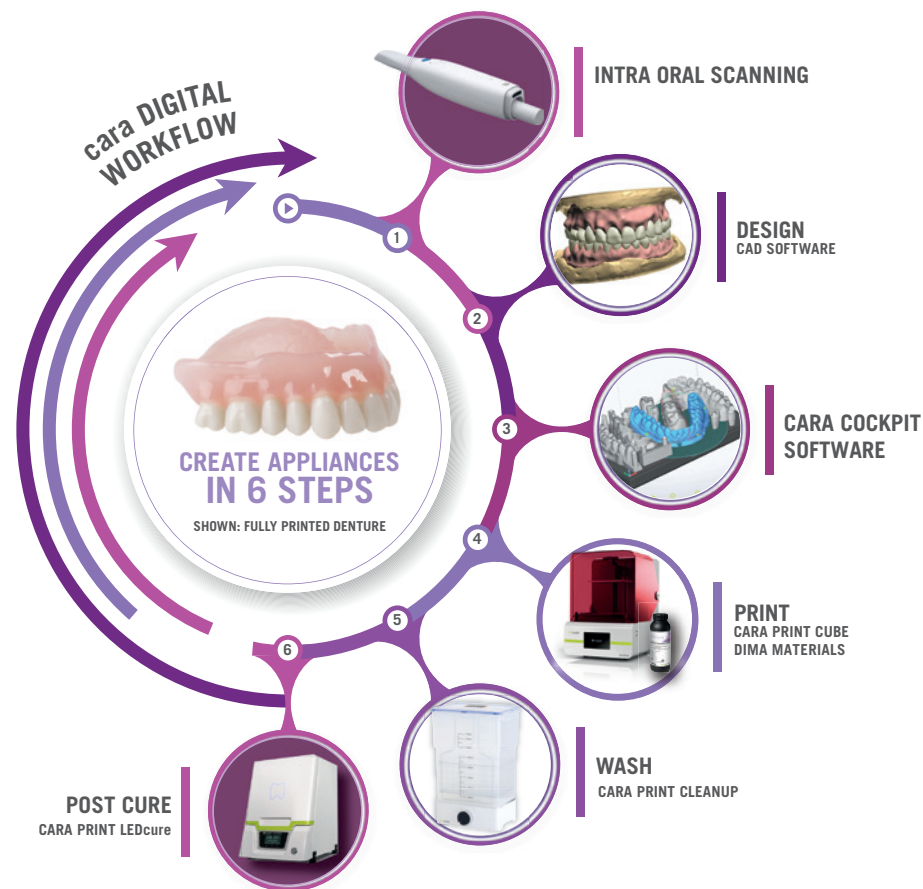
cara® Print CleanUp

Automated cleaning for 3D printed materials.

Save time and effort with the **cara Print CleanUp**, your reliable solution for efficiently cleaning 3D-printed dental indications with ease.

- Designed for versatility, it works seamlessly with multiple cleaning buckets and offers hands-free operation to clean parts directly on the build platform.
- Audible and light alerts ensure you stay in control without constant monitoring.

*Be sure to complete two separate cleanings: First wash in isopropanol for 3 mins, then wash in fresh Isopropanol for 2 minutes, either using a second cara Print CleanUp wash unit or a second set of containers.



cara Print CleanUp

cara Print CleanUp	66100119
cara Print CleanUp Washing Bucket	66100120

New Workflow Solutions by Kulzer

Work Better with Kulzer Workflows

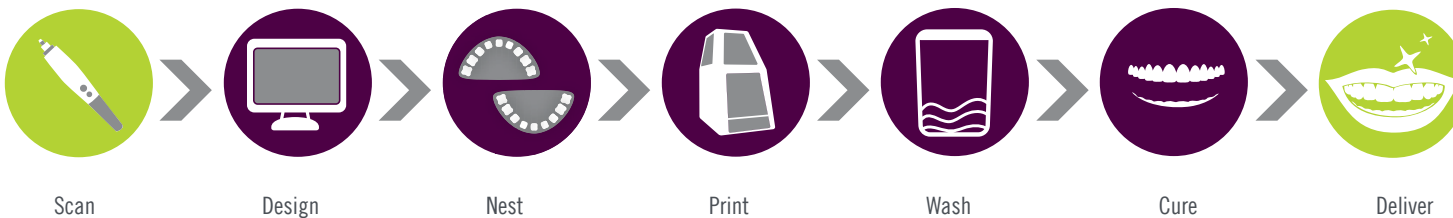
Save time and money and work with confidence by following a **Kulzer Workflow**.

These comprehensive Workflows are detailed and tested processes that ensure consistent outcomes. Each step includes product recommendations and expert tips to help you achieve the best results.

Digital Restorative Workflow for Dentists

Streamline the restorative process saving you and your clients chair time. Fabricate restoratives of the highest quality and durability.

2 Steps for Dentists: Impression | Deliver



Analog Denture Workflow for Dental Labs

Boost production and streamline your team's analog denture fabrication process. This Workflow will teach your technicians how to get consistently beautiful results with every case.

5 Steps for Labs: Model & Impression Tray | Base Plate & Bite Blocks | Teeth Setup | Denture Processing | Denture Finishing



Direct Restorative Workflow for Dentists

Optimize your restorative process with the tips in this Workflow that will help you save chair time and place durable, esthetic composite restorations.

4 Steps: Tooth Isolation | Prep & Adhesive | Fill Direct Restorative | Finish & Polish



Refining Solutions

Want to earn more for your scrap? Kulzer Precious Metal Refining

Direct Refining for Higher Returns

No middleman. No hidden fees. No lowball scrap pile estimates.

Just a specialized in-house refining process and complete individualized assays to determine the precise value of each lot.

That's how Kulzer Precious Metal Refining guarantees you top dollar for your dental scrap.

Refine directly with Kulzer—the most trusted dental scrap refinery for the past 50 years—to enjoy the highest returns in the industry.

No middlemen. When you refine directly with Kulzer, you don't lose money in commissions to weigh-and-pay dealers who guesstimate the value of your scrap on the spot.

No hidden fees. Our prices are transparent so that you always know you're getting what your scrap is worth.

Scrap Refining	
Scrap Refining Folder Kit - US	40001148
Scrap Return Box (Holds 5 lbs max)	50900007
Scrap Return Drumette (Holds 15 lbs max)	50900008
Scrap Return 15-Gallon Drum (Holds 150 lbs max)	50900009
Scrap Return 30-Gallon Large Drum (Holds 300 lbs max)	50900019

Note: Scrap refining containers are complimentary.

Get a
5% Bonus
from Kulzer

You may qualify for 5% extra on your next scrap lot. Ask your Kulzer Sales Specialist for more information.



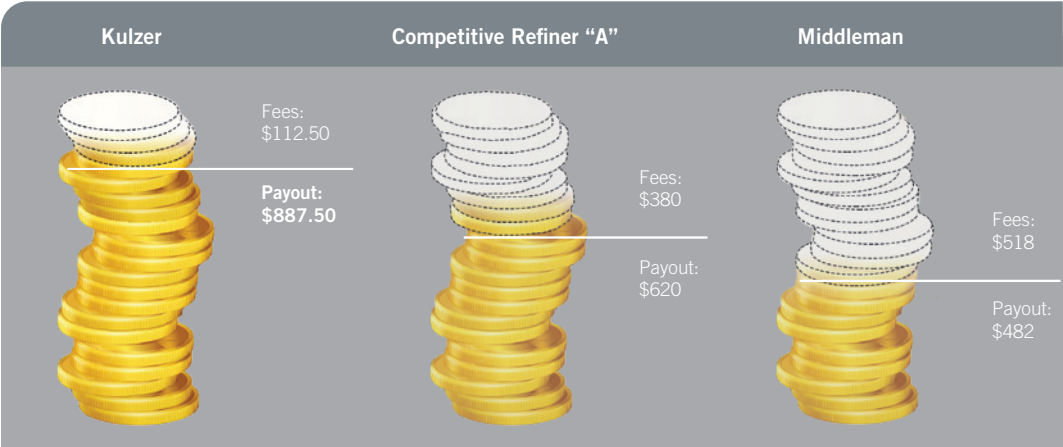
Scan for your free shipping & containers

Accurate technology-based assays. Kulzer Refining uses ICP-AES technology to precisely determine precious metal composition in each scrap lot.

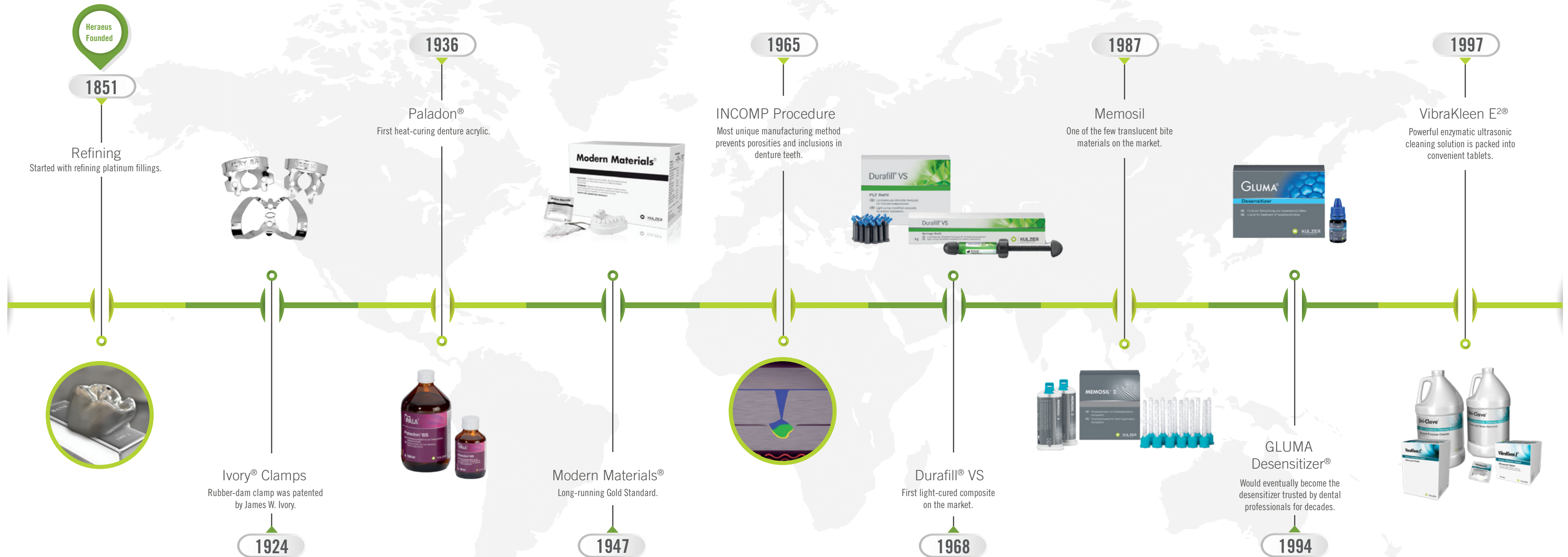
Autoship option. The easiest way to get “free” money, our Autoship Program helps you regularly cash in on the precious metals hiding in your lab or practice.

Free shipping & containers. It costs you nothing to let us pick up your dental scrap.

Free assay report. Our valuations are 100% transparent. Get the full breakdown of the composition of your scrap to see how we calculated your payout.



*Assuming all quantities of precious metals are equal. Actual payout varies depending on the quantities of precious metals and value of London metal exchange when assayed.







KULZER
MITSUI CHEMICALS GROUP

Exploring the full range of Kulzer solutions just got easier.

Did you know that you can now easily locate your favorite Kulzer products in one convenient online shopping experience?

Visit the Kulzer Shop online to:

- Enjoy faster ordering
- Access special offers
- Discover the latest innovations

Visit **Shop.Kulzer.com** to create your account.



Distributed by:

Kulzer, LLC

4315 S. Lafayette Blvd.
South Bend, IN 46614
(800) 431-1785

Manufactured by:

Kulzer GmbH

Leipziger Straße 2
63450 Hanau, Germany
info.dent@kulzer-dental.com

kulzerUS.com