



Venus Family of Composites

The new standard of care.

The most complete line of low-stress composites on the market, providing an unprecedented combination of low shrinkage stress, high durability and superior handling for esthetic brilliance without compromise.



Giving a hand to oral health



KULZER
MITSUI CHEMICALS GROUP

One Proven Chemistry – Three Viscosities.

The innovative urethane monomer chemistry of the Venus® Family of Composites sets the new standard of care with an unprecedented combination of low shrinkage stress and high flexural strength. This crucial combination protects restorations against fracture and secondary caries – still the main reason for direct restorative failure. Venus Pearl, Venus Diamond, and Venus Diamond Flow may be used together or individually for long-lasting esthetic solutions that meet all of your restorative needs.

Venus® Diamond

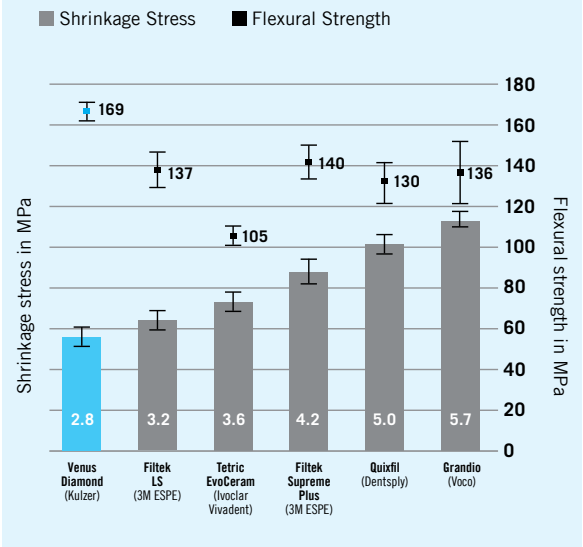
Blending elegance and efficiency.

Offering a firm, more packable consistency, Venus Diamond leads the industry in color adaptability with a patented formula that provides an outstanding natural look – replicating nature and mimicking tooth anatomy. Just one shade saves time and produces radiant results.

Along with superb color esthetics, this revolutionary nano-hybrid composite exhibits exceptional durability, superb handling, low shrinkage and low shrinkage stress.



Excellent Flexural Strength, Low Shrinkage



The result: Venus Diamond is more flexible under stress and more durable over time.

Kulzer R&D, Wehrheim, Germany. Data on file.

Venus® Pearl

Beauty beyond esthetics.

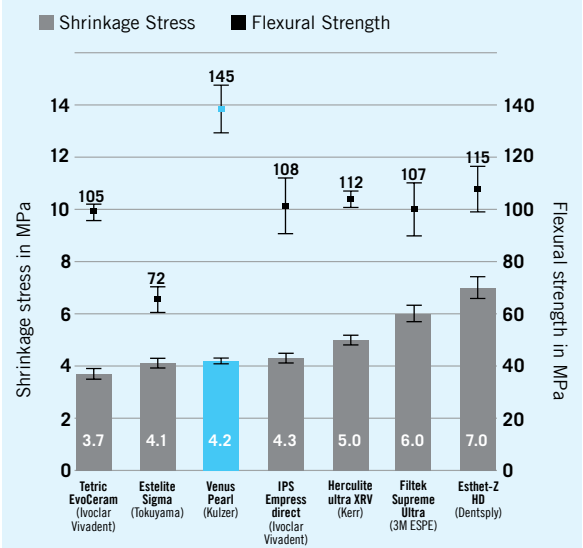
Venus Pearl is a universal nano-hybrid composite based on the innovative urethane monomer chemistry of Venus Diamond.

Venus Pearl offers the same combination of low shrinkage stress and high durability—in a creamy consistency. Simple and easy to use, the consistency of Venus Pearl is ideal for fine detailed work.

Its exceptional sculptability and high degree of polishability make Venus Pearl well suited for anterior as well as posterior restorations.



Shrinkage & Flexural Strength in MPa



The result: Venus Pearl offers a combination of low shrinkage stress and high flexural strength that prevents fracture and secondary caries.

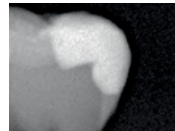
Kulzer R&D, Wehrheim, Germany. Data on file.

Venus® Diamond Flow

The flowable composite for all-round esthetics.

Venus Diamond Flow is ideal as a base or liner, offering a Baseline White shade for blocking out dentin discoloration. Its thixotropic handling provides easy control.

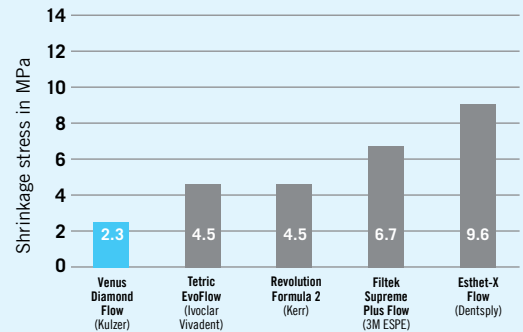
- High radiopacity.
- Low shrinkage stress.
- High flexural strength.
- Superior shade adaptation.



On X-ray, distinct separation between Venus Diamond and Venus Diamond Flow and the residual tooth structure.



Exceptional performance with low shrinkage stress



The result: Venus Diamond Flow exhibits lower shrinkage stress than leading flowables ensuring better marginal integrity.

Kulzer R&D, Wehrheim, Germany. Data on file.

Venus® Bulk Fill

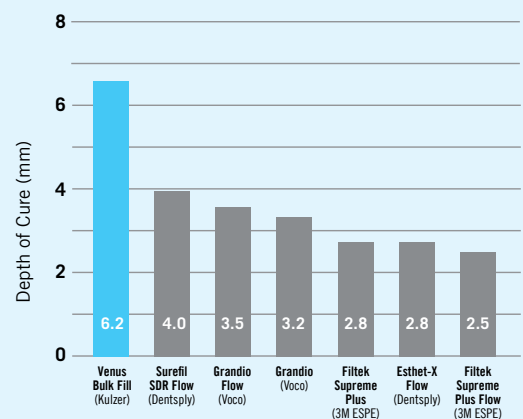
Faster, esthetic posterior restorations simplified.

Venus Bulk Fill is an advanced posterior restorative solution that provides dentists with a faster, easier technique than incremental layering. The result—a reduction in chair time, and a more efficient and cost effective restoration.

- Compatibility with all methacrylate based bonding adhesives and composites.
- Pediatric Kit with iBond Self Etch bonding agent for a quick and easy restoration.



Superior depth of cure



The result: Venus Bulk Fill shows more than 4mm depth of cure.

Source: ADA Professional Product Review, Spring 2010, Volume 5, Issue 2 and Competitive Manufacturer's Technical Data.

Venus® Pearl

66048214	Venus Pearl PLT Masters Kit 10 x 0.2g PLT each of the shades A1, A2, HKA2.5, A3, A3.5, A4, 5 x 0.2g PLT each of the shades HKA5, B1, B2, B3, C1, C2, C3, D3, CL, AM, CO, YO, OLC, OMC, ODC, OXDC, BL, BXL, OB, GUM, 5 x 0.3g PLT of the shade CORE; 2 x 1.8g Venus Diamond Flow Syringe Baseline; Venus Family Shade Guide; Venus Pearl Layering Guide; Pictorial Card											
66065931	Venus Pearl PLT Basic Kit 10 x 0.2g PLT each of the shades A1, A2, HKA2.5, A3, A3.5, A4, 1 x 2ml Bottle of iBOND® Universal; Venus Pearl Layering Guide; Pictorial Card											
66065932	Venus Pearl Syringe Basic Kit 1 x 3g syringe each of the shades A1, A2, HKA2.5, A3, A3.5, A4, 1 x 2ml Bottle of iBOND® Universal Etch; Venus Pearl Layering Guide; Pictorial Card											
66055463	Venus Pearl Shade Guide											
Shades	Syringe	PLT 20 x 0.2g	PLT 10 x 0.2g	Shades	Syringe	PLT 20 x 0.2g	PLT 10 x 0.2g	Shades	Syringe	PLT 20 x 0.2g	PLT 10 x 0.2g	
A1	66048175	66048090		C1	66048185	66048150		BL (Bleach)	66048193		66048096	
A2	66048176	66048141		C2	66048186	66048161		BXL (Bleach Extra Light)	66048194		66048097	
A3	66048178	66048143		C3	66048187	66048162		OB (Opaque Bleach)	66048195		66048095	
A3.5	66048179	66048144		D3	66048188	66048163		CL (Clear)	66048196		66048098	
A4	66048180	66048145		HKA2.5	66048177	66048142		AM (Amber)	66048197		66048099	
B1	66048182	66048147		HKA5	66048181	66048146		CO (Clear Opal)	66048198		66048100	
B2	66048183	66048148		OLC	66048189		66048164	YO (Yellow Opal)	66048199		66048171	
B3	66048184	66048149		OMC	66048190		66048165	CORE	66048200		66048172	
				ODC	66048191		66048093	GUM	66048201		66048173	

Venus® Diamond

66055476	Venus Diamond PLT Basic Kit 10 x 0.25g of the shades: A2, HKA2.5, A3, OLC, OMC, CL; 1 x 2ml Bottle of iBOND® Total Etch, Venus Diamond Layering Guide, Pictorial Card											
66055475	Venus Diamond Syringe Basic Kit 1 x 4g syringe each of the shades: A2, HKA2.5, A3, OLC, OMC, CL; 1 x 2ml Bottle of iBOND® Total Etch, Venus Diamond Layering Guide, Pictorial Card											
66039004	Venus Diamond Shade Guide											
Shades	Syringe	PLT 20 x 0.25g	PLT 10 x 0.25g	Shades	Syringe	PLT 20 x 0.25g	PLT 10 x 0.25g	Shades	Syringe	PLT 20 x 0.25g	PLT 10 x 0.25g	
A1	66035471	66039008		C2	66035481	66039018		BL (Bleach)	66035487		66039025	
A2	66035472	66039009		C3	66035482		66039019	BXL (Bleach Extra Light)	66035488		66039026	
A3	66035474	66039011		D3	66035483		66039020	OB (Opaque Bleach)	66035489		66039024	
A3.5	66035475	66039012		HKA2.5	66035473	66039010		CL (Clear)	66035490		66039027	
A4	66035476		66039013	HKA5	66035477		66039014	AM (Amber)	66035491		66039028	
B1	66035478	66039015		OLC	66046735		66046731	CO (Clear Opal)	66035492		66039029	
B2	66035479	66039016		OMC	66046736		66046732	YO (Yellow Opal)	66035493		66039030	
B3	66035480		66039017	ODC	66046737		66046733					

Venus® Diamond Flow

66040353	Venus Diamond Flow Syringe Assortment 1 x 1.8g syringe each of shades A1, A2, A3, and Baseline											
66040367	Venus Diamond Flow PLT Assortment 10 x 0.2g each of shades A1, A2, A3, and Baseline											
Shades	Syringe	PLT 20 x 0.2g	Shades	Syringe	PLT 20 x 0.2g	Shades	Syringe	PLT 20 x 0.2g				
A1	66040354	66040368	A4	66040360	66040373	OM (Opaque Medium)	66040363	66040376				
A2	66040355	66040369	B2	66040362	66040375	CL (Clear)	66040364	66040377				
A3	66040358	66040371	HKA2.5	66040357	66040370	BXL (Bleach Extra Light)	66040365	66040378				
A3.5	66040359	66040372	HKA5	66040361	66040374	Baseline	66041052	66041051				

Venus® Supra

66039110	Venus Supra Kit (10 polishers: each of all five shapes as pre- and high gloss polishers)
Refills	Item Number
Cup	66039161
Disk	66039162
Flame	66039163
Large Cup	66039164
Large Flame	66039165

Venus® Bulk Fill

66057342	Venus Bulk Fill Syringe Pediatric Kit 4 x 1.8 g syringes Venus Bulk Fill – universal shade, 1 x 2 ml bottle of iBOND Self Etch, 1 of 6 finger puppets
66044743	Venus Bulk Fill PLT Refill 10 x 0.2 g PLTs Venus Bulk Fill – universal shade
66046795	Venus Bulk Fill Syringe Refill 1 x 1.8 g syringe Venus Bulk Fill – universal shade

Distributed by:
Kulzer, LLC
4315 S. Lafayette Blvd.
South Bend, IN 46614
(800) 431-1785

Manufacturer:
Kulzer, GmbH
Leipziger Straße 2
63450 Hanau, Germany
info.dent@kulzer-dental.com