



Mondial®i and Mondial® with Flexecure®
Esthetics. Functionality. Quality.

Giving a hand to oral health.



KULZER
MITSUI CHEMICALS GROUP

Mondial[®]i and Mondial[®] with Flexecure[®]

For all those who expect more from their teeth

If your clients' patients are considering a dental prosthesis but are concerned about keeping a natural-looking smile, Mondial i and Mondial with Flexecure is the solution.

Mondial i and Mondial tooth lines from Kulzer bring some of the latest advances in dental prosthetic technology. With the innovative Flexecure technology and precise manufacturing methods, Mondial i and Mondial enhance both the esthetics and functionality of dental prostheses.

With Mondial i and Mondial you'll improve smiles and self-confidence. Mondial i and Mondial offer the best features once found only in the Kulzer premium[®] line—such as modern CAD/CAM manufacturing technology.



The advantages of Mondial[®]i and Mondial[®]

Natural beauty and guaranteed precision

1. New tooth shapes for natural appearance

Improved color effect, optimal layering, and anatomically improved shapes help you create a more natural-looking smile. Mondial i and Mondial look more like natural teeth. The color effect, layering and surface structure, and the shapes of Mondial i and Mondial anterior teeth are anatomically configured to the square, triangular, oval and rectangular face shapes. The layering of Mondial i and Mondial teeth has been adapted to that of natural teeth. The pronounced contouring of the labial surfaces ensure dynamic shades in every light. The cervical collar can be variably aged by selective grinding, making Mondial i and Mondial appropriate for every age group.

Morphologically correct occlusal anatomy makes the Mondial i and Mondial posterior teeth look naturally beautiful and guarantee precise intercuspation. The buccal surfaces, the layering, the color effects, and the variable neck have also been anatomically matched to the anterior teeth.



Improved color effect, optimal layering, and anatomically improved shapes help you create a more natural-looking smile.

2. Modern CAD/CAM technology for improved functionality

State-of-the-art CAD/CAM manufacturing technology creates absolutely identical tooth pairs for perfect intercuspation. The functionality and masticatory efficiency of dental prosthetic work is crucially dependent on the correct, precisely defined and therefore reproducible cusp angulation of artificial posterior teeth. This art has been perfected by Mondial i and Mondial and incorporated into modern CAD/CAM manufacturing technology—precision with no dimensional deviation. Bilateral digitalization ensures Mondial i and Mondial tooth pairs are 100% identical and absolutely consistent in their functionality.

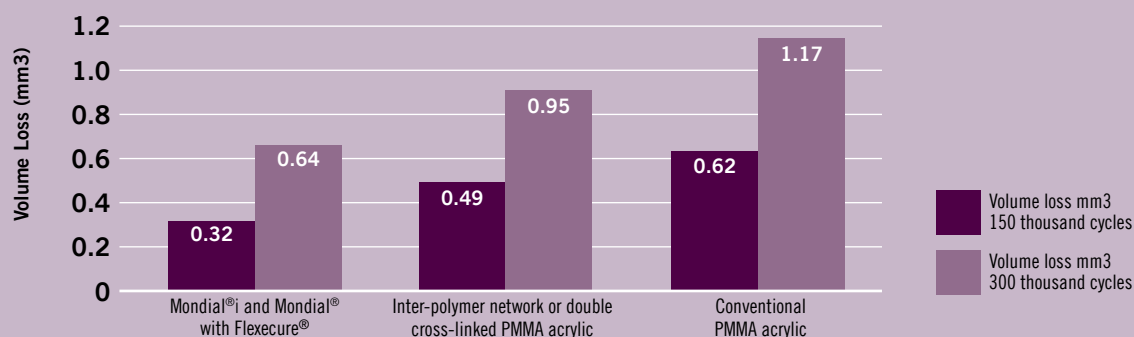


The teeth fit together for perfect intercuspation.



State-of-the-art CAD/CAM manufacturing technology creates absolutely identical tooth pairs for perfect intercuspation.

Comparison of abrasion of dental materials in use



Source: Three-body abrasion according to ACTA, Amsterdam, The Netherlands

3. Flexecure for longer life

As the world's first and only dental acrylic using Flexecure, Mondial i and Mondial set new standards in material quality. With unique inorganic fillers (rubberized zones) integrated into a highly cross-linked, tough elastic matrix, Mondial i and Mondial far exceeds the material requirements of EN ISO 22112:206.

Our unique filler gives Mondial i and Mondial teeth an abrasion resistance previously only known in the field of composites. Independent abrasion studies conducted at the University of Heidelberg and the Charité hospital in Berlin revealed a 50% higher abrasion resistance for this new dental material with Flexecure compared with conventional PMMA (polymethyl methacrylate) acrylic materials.

The result: a significantly longer lifespan—and significantly happier patients.

Aldo Leopardi, BDS, DDS, MS Prosthodontist:

“Working with Kulzer teeth is an absolute pleasure! They exhibit natural contours, smooth transition to the cervical area, and layering for the depth of shade, opalescence and natural fluorescence. Another advantage is with the CAD/CAM manufacturing process, affording the clinician prosthetic teeth which provide 100% identical pairing; resulting in consistent quality, performance, and excellent esthetics.”

Mondial[®]i and Mondial[®] with Flexecure[®]

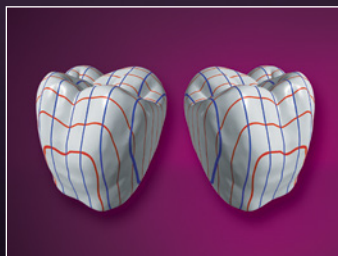
Three decisive developmental steps ahead



1. More choices of tooth shapes for a natural look

1. Anatomically superior and optimal layering for anterior and posterior teeth

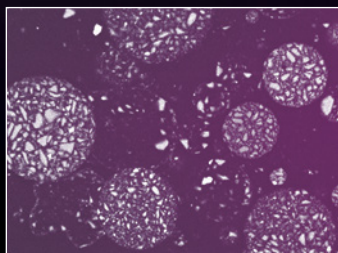
- Square, triangular, oval and rectangular face shape
- Vibrant colors due to pronounced contouring of the labial surfaces
- No age-related abrasion surfaces; the neck of the tooth can be variably aged by grinding



2. A precise fit for improved functionality

2. 100% identical pairing thanks to modern CAD/CAM manufacturing technology

- Zero-tolerance digital mould construction
- State-of-the-art manufacturing technology with no dimensional deviation
- Precise intercuspatation resulting from correct occlusal anatomy in posterior teeth



3. Advanced acrylic materials for longer life with Mondial[®] i and Mondial[®]

3. Achieve top abrasion resistance, with Flexecure

- Use of unique organic fillers integrated into a highly cross-linked, tough elastic matrix
- Significantly longer lifespan
- Abrasion resistance comparable to composites

Mondial® i and Mondial® with Flexecure® Esthetics. Functionality. Quality.

The 28 shapes for anterior teeth and 5 for posterior teeth in the Mondial i and Mondial tooth lines are available in 16 shades (A1-D4) and 2 bleach shades (BL1 and BL2).

Our teeth are produced with the INCOMP technique. This advanced manufacturing technique allows Mondial i and Mondial teeth to be created without porosities from the outside right down to the center of each tooth. The INCOMP technique also makes each tooth extremely dense.

Kulzer teeth meet all the requirements of EN ISO 22112:2006.



More choices with Mondial® i and Mondial®

Dentists and patients today have more material options when repairing missing, worn, broken, or decayed teeth. Mondial i and Mondial, advanced new dental acrylic with Flexecure, enhances both the aesthetics and functionality of your patients' dental prostheses.

Dental professionals worldwide appreciate the quality materials, strength, durability, and meticulous manufacturing of Mondial i and Mondial acrylic prostheses. Patients appreciate their natural-looking appearance and precise fit.

Try Mondial i and Mondial with Flexecure today!



Also from Kulzer:

Pala® Polish

Achieve a high shine and remove scratches in one step.

The cream for polishing dental appliances

- Simultaneously removes scratches and leaves a high shine on dental appliances.
- No need for pumice.
- Reduce polishing times.
- Available in an 80 gram jar.



Distributed by:
Kulzer, LLC
4315 S. Lafayette Blvd.,
South Bend, IN 46614
(800) 431-1785

Manufactured by:
Kulzer GmbH
Leipziger Straße 2
63450 Hanau, Germany
info.dent@kulzer-dental.com